

# Professional Builder®

Leading the Business of Home Building [www.HousingZone.com](http://www.HousingZone.com)

2006



# IBS PRODUCT SHOWCASE





Freedom of **EXPRESSION** comes in many shapes and sizes.

**Proudly offered:** Custom shapes and sizes from Weather Shield give you the freedom to create practically any window or door. Simulated Divided Lite (SDL) stars shown here in maple and True Divided Lite (TDL) stripes in cherry and mahogany from Weather Shield's Custom Wood Interiors Collection®. Blue, red, dark red and opaque white glass from Vanceva™ by Solutia®. For complete custom capabilities call **1-800-477-6808** or visit **[weathershield.com/PB](http://weathershield.com/PB)**



Demand better. Compromise nothing. **Want More™**

For Free information circle 1



IF YOU'D FRAMED THIS WITH TIMBERSTRAND® LSL  
HE WOULDN'T BE MAKING A CAREER  
OUT OF THIS JOB.



FRAME WITH TIMBERSTRAND® LSL HEADERS AND YOU'LL GET MORE REFERRALS THAN CALLBACKS. These days when you're framing walls of windows, stable headers are even more critical. TimberStrand® LSL is engineered lumber that's free of knots, and resists bowing and twisting so it makes great headers and studs. Use it and your windows and doors won't stick due to warped headers. Use TimberStrand® LSL studs and your walls will be straight as a chalk line. TimberStrand® LSL installs easily and is extremely stable so your crew can keep moving. For your nearest Trus Joist dealer, visit [www.trusjoist.com](http://www.trusjoist.com) or call 1-800-338-0515.



Visit us at: [www.trusjoist.com](http://www.trusjoist.com)

For Free information circle 2

Copyright © 2005. All rights reserved. Trus Joist® and TimberStrand® are registered trademarks of Trus Joist, A Weyerhaeuser Business, Boise, Idaho.



Mid-December 2005

# Contents

Professional Builder *Leading the Business of Home Building* [www.HousingZone.com](http://www.HousingZone.com)

## Exterior Products .....8

Learn about new roofing, siding, decking and specialty products for the exterior of the home.

## Piping/Plumbing .....12

New piping and plumbing products fill the need for residential drainage systems, flexible piping and gas piping.

## Mechanical/Electrical .....14

HVAC manufacturers feature improved central vacuum systems with automated functions, wireless systems and quiet operations and an exhaust chimney fan for fireplace installations.

## Insulation .....17

Insulate new homes from the effects of excess moisture and sun with these house wraps and radiant barrier products.

## Interior Products .....18

Find out about cable stairing solutions, fireplaces, home automation systems and the newest cabinets for 2006.

## Structural Systems ...22

Here are framing products for narrow wall structures and load bearing construction plus insecticide solutions and warranties that work after the homes are built.

## Construction Equipment & Tools .....24

Compact cordless tools that help illuminate your work area and a multi-tasking bulldozer that can assist with moving, demolishing and building.

## Kitchen & Bath .....29

From minimalist shower fixtures, glass products and countertops these are the kitchen and bath products to look for in 2006.

## Lighting .....33

Internet lighting showroom can expand your design center instantaneously. Don't forget to include outdoor lighting fixtures and indoor lighting controls in your product mix for 2006.

## Windows & Doors .....35

Build storm-proof and thermally insulated new homes with these window and door offerings.

## Software Systems & Services .....43

Software packages for the business and design aspects of home building as well as a mortgage company that creates loan options specific to builders.

## Paints, Caulks & Sealants .....47

Interior and exterior paints that resist fading plus moisture proofing, flexible caulks — available in a rainbow of colors — for inside and outside jobs.

## In the Show!

Every year, building product manufacturers debut the newest and greatest at the International Builders' Show. In this special issue of Professional Builder, we provide a glimpse of some of the new products you'll see on the show floor.

But there's more going on at the show than just the great products. In the parking lot, Professional Builder will build three houses that display all those great products in the environment they belong — homes. Show Village is also a great place to network during our Block Party that runs from 4:00 p.m. to 6:00 p.m. everyday. Listen to some great blues, talk to manufacturers, get the inside tips from other builders.

We'll also give away great prizes through our Passport program. During the show, visit the booths of our sponsors and get your passport stamped. Bring the completed passport to Show Village and win an iPod or a Plasma screen television. Pick up your passport at Show Village or any sponsor's booth or by visiting us at [www.HousingZone.com/SVo6](http://www.HousingZone.com/SVo6)

Professional Builder also opens the show with One Night, One Industry — a gathering of the best of the best. We'll recognize the winners of the Best in American Living Awards, which we co-sponsor with the National Association of Home Builders. And we'll award our Builder of the Year award. For tickets, you can go to [www.HousingZone.com/ONO1](http://www.HousingZone.com/ONO1).

*Paul Deffenbaugh*

Paul Deffenbaugh  
Editorial Director

Cover photos (Clockwise from top)  
Crossville Tile Color-Blox, Cambria,  
HB & G Columns, Delta Faucets.



See us at Booth W1909  
at the International  
Builders' Show  
Jan. 11-14.

# Picture a craftsman style entryway that's **truly better.**

## Introducing Classic-Craft® American Style Collection™

Instant curb appeal and enduring customer satisfaction. That's the true beauty of this striking addition to our Classic-Craft® family of quality fiberglass entryways. American Style's historically correct "craftsman" design is the result of our AccuGrain™ technology. This patented approach delivers real wood grain

appearance with all the advantages of

Therma-Tru fiberglass. Unmatched in the industry, it produces grain that is so true-to-life, it's virtually indistinguishable from fine wood – yet it will never split, crack or rot like wood.

Bring American Style's truly better design and durability to your home.

Visit: [www.thermatru.com](http://www.thermatru.com)



For Free information circle 3  
**THERMA-TRU**  
DOORS

*The Most Preferred Brand in the Business™*

Door Style: CCA232  
Sidelites: CCA3402  
Transom: VGRT-Villager™ glass

©2005 Therma-Tru Corp. is a Fortune Brands Company.



# Exterior Products

## Specialty Products



**SUPERIOR CLAY**



**FYPON**

**HB&G**



**SMART VENTS**

### SUPERIOR CLAY

Superior Clay has added three new styles to its chimney pot collection: the large Plaza, the large Savoy and the large Halifax. Featuring a natural terra cotta finish, the tops are also available in other glazes including black, buff, limestone, sandstone, dark red and salt glaze (brown). In addition to these styles, Superior Clay offers nearly 60 other standard-style chimney pots and provides custom-made designs that add personal character to a home.  
800-848-6166 / [www.superiorclay.com](http://www.superiorclay.com)  
Circle No. 289. / Booth S12658

### FYPON

A new line of 25 cupolas from the William E. Poole Collection features a Fypon PVC base and roof support, with the sill, crown molding and louvers made of Fypon urethane. The low-maintenance cupolas include real copper roofs that age in time and have an opening at the top for a weather vane. Cupolas come in three

sections: base, center section and roof. Stainless steel assembly fasteners and caulking are included.

Fypon's new cupola series include both venting (featuring fiberglass mesh screen) and non-venting center sections, with either octagonal or square bases. The center portions can include louvers, wren birdhouse styles or glass windows. Roof options include bell, pagoda, peak and seam styles.  
800/446-3040 / [www.fypon.com](http://www.fypon.com)  
Circle No. 290. / Booth W2243

### HB&G BUILDING PRODUCTS

HB&G PermaWrap cellular PVC columns are designed to eliminate costly damage and replacement of columns during the construction process. Contractors can install PermaWrap columns around existing structural posts with the final trim package to eliminate costly damage and callbacks.  
800/264-4424 / [www.hbgcolumns.com](http://www.hbgcolumns.com)  
Circle No. 291. / Booth W3483

### OWENS CORNING

Owens Corning Cultured Brick Thin Brick Veneers offer the full thickness and beauty of brick at half the cost and one-quarter the weight. Cultured Brick now also enjoys the flexibility of nine colors, including new Horton Bay, High Desert, Bucks County and Chardonnay. The 1/2-inch-thick Cultured Brick can be installed indoors or out without the expense of additional foundation support. The product is also noncombustible and perfect for fireplaces in any room.  
419-248-6863 / [www.owenscorning.com](http://www.owenscorning.com)  
Circle No. 292. / Booth W1743

### SMART VENT

Smart Vent automatic foundation flood vents protect homes from the devastation and destruction that a hurricane or a flood can cause. Designed to provide ventilation as well as flood protection, it is certified to meet the requirements set forth by FEMA for all homes or buildings located in a flood plain.

All Smart Vent products are certified engineered openings, providing an automatic entry and exit of flood waters that exert hydrostatic pressure on foundations during flooding. The vents have two floats that automatically release with rising water. Once released, the floats open the bi-directional flood door, rotating it out of the path of the flood waters. In doing so, the vent provides the unobstructed three inch opening required for flood water to enter and exit.  
877-441-8368 / [www.smartvent.com](http://www.smartvent.com)  
Circle No. 293. / Booth S12722



# Exterior Products

## Specialty Products



**KEYSTONE  
RETAINING WALL  
SYSTEMS**



**TENDURA**

**ROYAL CROWN**



**TIMBERTECH**



**SALSBURY INDUSTRIES**

### **SALSBURY INDUSTRIES**

U.S. Postal Service-approved 4850A antique rural mailboxes from Salsbury are now available in a durable, antique bronze, powder-coated finish. Providing an antique look each mailbox features a 1/8-inch-thick, extruded-aluminum body with a 1/8-inch-thick, die-cast aluminum front door and rear cover. Also included are a magnetic door catch and an adjustable burgundy signal flag. Antique rural mailboxes can be ordered with an optional newspaper holder and mounted on standard posts, classic posts, decorative posts, deluxe posts, or a base of your choice. Multiple antique rural mailboxes may be mounted on the classic as well as on the deluxe two-sided posts, or on standard and decorative posts using optional spreaders. 800-MAILBOX. / [www.mailboxes.com](http://www.mailboxes.com)  
**Circle No. 294. / Booth W5390**

### **KEYSTONE RETAINING WALL SYSTEMS**

Keystone Century Wall has introduced new half-size units, crafted specifically for taller wall structures and heavy-loading conditions. Keystone Century Wall offers the distinctive appearance and character of a natural stone wall with the structural integrity and performance of concrete. Three differently - sized Keystone Century Wall units plus a new half-height unit size help create the appearance of classic, handcrafted stonewalls. 952-897-1040 / [www.keystonewalls.com](http://www.keystonewalls.com)  
**Circle No. 295. / Booth W2883**

### **TIMBERTECH**

Using a new color-streaking process, the TimberTech Earthwood Plank replicates the look of an expensive tropical hardwood. TimberTech Earthwood in Tropical Walnut is now available as deck plank and fascia.

Made from a patented formulation of pure plastic resins and high-quality wood

flour, TimberTech Earthwood Planks couple low maintenance with elaborate design elements. The result is a complete decking system with extraordinary aesthetics that is easy to install and maintain, as compared with wood. 800-307-7780 / [www.timbertech.com](http://www.timbertech.com)  
**Circle No. 296. / Booth W543**

### **ROYAL GROUP TECHNOLOGIES**

Royal Crown Limited's newest product, the Harmony Select Decking System, is manufactured with Celucor. Celucor blends the beauty of wood grains, the brawn and flexibility of composites and the weather resistance of vinyl. 800-488-5245  
[www.royalcrownltd.com/harmony/select/](http://www.royalcrownltd.com/harmony/select/)  
**Circle No. 297. / Booth W201**

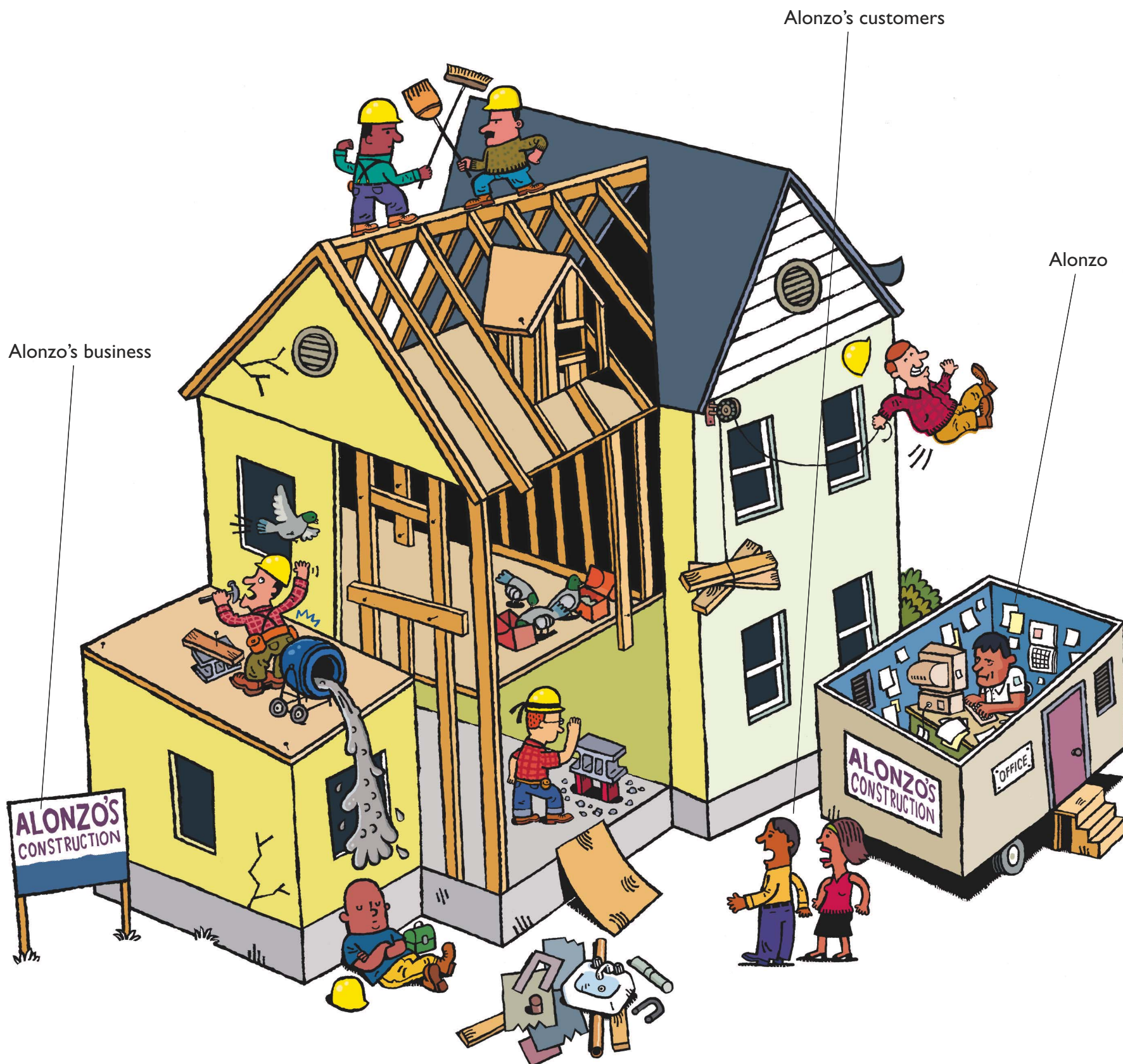
### **TENDURA**

TenduraPlank tongue-and-groove porch flooring now features a patent-pending spacer bead on the plank's tongue, which automatically creates the required expansion joints. Available in both the TenduraPlank Classic and the Solids Collection, the new beaded tongue saves installation time and labor costs. 800-TENDURA / [www.tendura.com](http://www.tendura.com)  
**Circle No. 298. / Booth W3491**

### **Product Specifications**

TenduraPlank is available in a 7/8-inch thickness and in widths of either 3 1/8-inch or 5 1/4-inch (special order only). The product comes in 8-, 10-, 12-, 14-, or 16-foot lengths and is pre-drilled 8 inches on center along the tongue of the product.





## Are your business finances turning out to be a big headache?

The power to relieve the financial hassles of running your small business. That's what you'll get with Capital One's Small Business Solutions. Our Business Platinum Card features online account servicing which gives you easy access to your transactions; a free year-end summary that automatically separates your transactions; dedicated customer service for businesses; and an easy-to-use rewards program that lets you earn one mile for every dollar spent. So let us take some of the hassle out of handling your finances, and free up the key element that'll make your business a success—you. To find out more, visit us at [capitalone.com/business](http://capitalone.com/business) or call 1-800-209-1157. **What's in your wallet?**®

- ONLINE ACCOUNT SERVICING
- CUSTOM TRANSACTION REPORTS
- FREE EMPLOYEE CARDS
- DEDICATED SERVICE REPS



BUSINESS LOANS

LINES OF CREDIT

CREDIT CARDS

For Free information circle 4

Offer intended for qualified applicants only. Terms subject to change without notice. ©2005 Capital One Services, Inc.

**Capital One**®

**small business**  
SOLUTIONS



# Exterior Products

## Roofing & Siding

### HUBER ENGINEERED WOODS



### CRANE PERFORMANCE SIDING

**HUBER ENGINEERED WOODS**  
ZIP System roof sheathing is a custom home-quality roofing system with a 30-year limited warranty against delamination. Manufactured by Huber Engineered Woods, the Zip System features a 1/2-inch roof sheathing panel with built-in Precipitex moisture barrier plus ZIP System tape to seal the seams. Instant rough dry-in allows subs to rough in electrical and plumbing sooner, while the system also eliminates the need for felt and H-clips.  
800-933-9220 / [www.huberwood.com/zip](http://www.huberwood.com/zip)  
Circle No. 299. / Booth W0491

**ARTISAN ROOFING PRODUCTS**  
Artisan Roofing Products, a James Hardie Company, has invented a new category of premium roofing products made with a exterior-surface roofing material. Featuring a proprietary manufacturing process, Artisan Shake combines natural roofing products with the strength and performance requirements of the building industry's toughest standards. Artisan Shake combines the look of premium wood-shake roofing with the durability of concrete.  
866-517-ROOF / [www.artisanroof.com](http://www.artisanroof.com)  
Circle No. 300. / Booth W3359

**CRANE PERFORMANCE SIDING**  
CraneBoard Board & Batten Siding from Crane Performance Siding provides the contemporary look of authentic rustic cedar. This new vertical siding features an architecturally correct, double 10-inch design, replicating the look of real cedar board and batten siding, but without the maintenance hassles. This siding can be



ALCOA



### ARTISAN ROOFING PRODUCTS

### ALSCO METAL CORP.

used as an accent or as a coverall. CraneBoard Board & Batten saves energy through its interlocking panels, which protects the home from the elements, including air infiltration and wind-driven rain.  
800-366-8472 / [www.cranesiding.com](http://www.cranesiding.com)  
Circle No. 301. / Booth W543

### ALCOA HOME EXTERIORS

Alcoa Home Exteriors' new Board & Batten premium vertical vinyl siding panels are low-maintenance with a low-gloss, cedar-grain finish that captures the appearance of real wood. Designed to provide the craftsman-quality detail of real cedar, this premium vinyl won't split, chip or flake, and never needs painting. The panels feature a 6 1/4-inch board with a 1 3/4-inch batten and can withstand a wind load of up to 125 miles per hour.  
800-962-6973 / [www.alcoahomes.com](http://www.alcoahomes.com)  
Circle No. 302. / Booth W0721

### ALSCO METALS CORP.

The Contours Collection, a line of virtually maintenance-free exterior trim products from Alasco, has been designed with elegance, value and long-lasting durability in mind. Backed by Alasco's lifetime limited warranty, these products have been engineered to help builders give a cost-effective finishing touch to any exterior application.  
800-231-9333 / [www.alscometals.com](http://www.alscometals.com)  
Circle No. 303. / Booth S11501



# Interior Products Pipes

## VANGUARD PIPING SYSTEMS

Vanguard's cross-linked polyethylene product, Vanex Ultra PEX, offers enhanced flexibility, superb chlorine resistance and proven UV resistance.

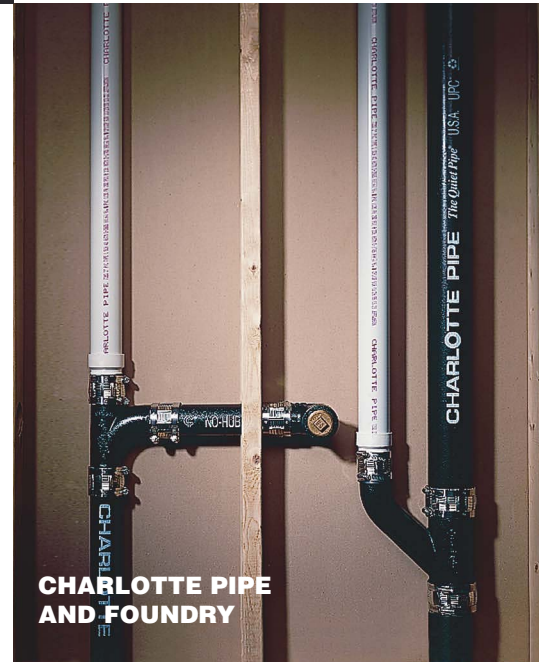
620-241-6369 / [www.vanguardpipe.com](http://www.vanguardpipe.com)

Circle No. 304. / Booth W2483



VANGUARD PIPING SYSTEMS

## OMEGAFLEX



CHARLOTTE PIPE  
AND FOUNDRY

## OMEGAFLEX

CounterStrike from OmegaFlex, makers of TracPipe corrugated stainless steel tubing (CSST), is the first flexible gas piping product engineered to decrease the potential for lightning-induced damage to fuel gas piping systems. CounterStrike's patent-pending, proprietary design helps dissipate the energy from a lightning event over a larger area, rather than transferring the risk elsewhere.

610-524-7272 / [www.tracpipe.com](http://www.tracpipe.com)

Circle No. 305. / Booth S12220

## CHARLOTTE PIPE AND FOUNDRY

The Quiet House System for residential drain, waste and vent (DWV) systems from Charlotte Pipe and Foundry adds value to new homes and offers builders a point of differentiation in the marketplace. The Quiet House System comprises cast iron waste piping and plastic vent lines for a complete, high-performance system. The cast iron pipe uses shielded hubless couplings that are easy to install and easy to alter for future modification. The system fits in modern stud walls more readily than plastic DWV systems, with no need to bypass living areas to reduce noise. Nailing plates are not required; furring strips, unnecessary.

800-438-6091 / [www.charlottepipe.com](http://www.charlottepipe.com)

Circle No. 306. / Booth W521



With graceful features like low-profile metal balusters, Latitudes decks never detract from the view.

Latitudes offers everything you need to design and build truly extraordinary decks. Enhance any outdoor living space with these long-lasting, easy-to-care-for products. Latitudes composite decking and railing products come in a range of styles, colors, and finishes. Finish your Latitudes project with your choice of ornamental options like metal balusters and post caps. The designs are virtually endless, which make homeowners very happy – and interior designers a little jealous.



  
**latitudes**<sup>®</sup>  
decking & railing

888-500-7704  
[www.latitudesdeck.com/pbd](http://www.latitudesdeck.com/pbd)

UFP Ventures II, Inc.  
A Universal Forest Products Company

For free information circle 5

50  
1955-2005



# We Aren't Satisfied until Your Customers Are



Reaching #1 in customer satisfaction is what makes a market leader in today's homebuilding climate.

NRS provides the tools to help you get there:

- ♦ Customer Satisfaction Research
- ♦ Sales Generation Analysis
- ♦ Solutions Consulting

Stop by booth W4692 at the International Builders' Show to learn more about how we can help you delight your customers.

**Congratulations to Simonini Builders!**  
for being named Builder of the Year by Professional Builder

To contact an NRS Satisfaction Consultant,  
log on to [nrscorp.com](http://nrscorp.com) or call 800.851.5823.  
For Free information circle 7

**nrs**<sup>TM</sup>

How **satisfaction** is measured.



# Mechanical/Electrical

## HVAC



**ELECTROLUX**

**EXHAUSTO**



**DIRT DEVIL**



**DIRT DEVIL**

The Dirt Devil central vacuum line from H-P Products has been upgraded and renamed. The enhanced filtered cyclonic power units, including the Dirt Devil and Dirt Devil Platinum Force lines, have been renamed Dirt Devil Dynamic, incorporating the versatility and power of the Dirt Devil central vacuum systems. The new line features higher-performance motors and quieter operation. To ensure exceptionally quiet operation, the units have been engineered with the motor dropped below the lid of the unit and then enhanced with a sound dampening, patented foam silencer.

330-875-5556/  
[www.centralvacheadquarters.com](http://www.centralvacheadquarters.com)  
**Circle No. 309. / Booth W4189**

**EXHAUSTO**

The EBC 5 from Exhausto is a new chimney fan speed control for use with gas-fired heating appliances and gas fireplaces. By regulating the speed of the

fan that creates the mechanical draft in the chimney system, the EBC5 provides a proper and accurate draft at the outlet of the heating appliance. The control also features an integrated safety function that prevents the heating appliance from operating in case of a mechanical or electrical failure.

The control constantly senses the draft in the chimney. In case of inadequate draft, it will increase fan speed gradually until the draft set point is satisfied. If it reaches maximum capacity and the draft set point is still not satisfied, the appliance will be shut down.

800-255-2923 / [www.chimneyfans.com](http://www.chimneyfans.com)  
**Circle No. 310. / Booth S10876**

### **ELECTROLUX HOME CARE PRODUCTS**

Electrolux's Solaire Central Vacuum System sets a new standard for performance, healthy living and builder profit. Available with 550 or 600 air watts of cleaning power, the Electrolux Solaire

**VACUFLO**



**BEAM INDUSTRIES**

allows users to clean more deeply and efficiently.

The system also brings intuitive technology to the homeowner. Its LCD display informs the user when the system's filters need cleaning and when to call for service. The display also advises the user about motor performance and hours of use.

800-369-2326 / [www.electroluxusa.com](http://www.electroluxusa.com)  
**Circle No. 311. / Booth W4582**

### **BEAM INDUSTRIES**

The Beam Prism Wireless Control System eliminates the need to install low-voltage wiring from the Central Vacuum System power unit to each wall inlet. A simple press of the switch on the Beam Advocate Central Vacuum System hose handle emits a radio signal that activates the power unit, whether in the garage, basement or utility room.

515-832-4620 / [www.beamvac.com](http://www.beamvac.com)  
**Circle No. 312. / Booth W4582**

**VACUFLO**

The upgraded VacuFlo Filtered Cyclonic central vacuum line from H-P Products has been renamed VacuFlo Whisper. The enhanced Filtered Cyclonic power units have been named revamped with higher-performance motors and quieter operation, among other modifications. To ensure quiet operation, the Whisper central vac units have been engineered with the motor dropped below the lid of the unit and then enhanced with a sound-dampening, patented foam silencer. To maintain maximum power with quieter operation, the units have also been upgraded with a substantial increase in air watts that provide higher vacuum performance.

330-875-5556  
[www.centralvacheadquarters.com](http://www.centralvacheadquarters.com)  
**Circle No. 313. / Booth W4189**



After location, location, location comes windows, windows, windows.



©2006 Marvin Windows and Doors. All rights reserved. ®Registered trademark of Marvin Windows and Doors.



A home's prestige comes not just from the lot you build on, but the materials you use. Marvin windows and doors are created with an artisan's attention to detail, from design and construction to performance. Our clad windows and doors are precisely assembled, with profiles that replicate the look of traditional wood. See the latest product introductions by visiting our booth W943 at the International Builders' Show. Call 1-800-241-9450 (in Canada, 1-800-263-6161) or visit [marvin.com](http://marvin.com)

**MARVIN**   
Windows and Doors

Made for you.®

For Free information circle 8



# DURACOUSTIC

## DURACOUSTIC® Sound control underlayment

*The simple, effective sound solution*

**DURACOUSTIC®** sound control underlayment, manufactured by Dura Undercushions Ltd is a simple but very effective solution to creating floor systems which meet stringent sound ratings in multiple-story dwellings (condominiums, hotels, apartments), private homes and business applications.

Testing carried out by National Research Council of Canada has demonstrated outstanding sound attenuation with a variety of construction assemblies and floor coverings, including ceramic tile, parquet, laminate and hardwood floors.

**DURACOUSTIC®** underlayment is a 5/16" reinforced rubber (recycled) matting with an open cell structure which enhances its sound deadening properties making possible the installation of cost effective sound-rated floors.

The **DURACOUSTIC®** underlayment system acts not only as a sound deadener but also as a decoupler by breaking the sound transmission path through the floor-ceiling assembly and prevents noise flanking room to room.

### *Advantages of using DURACOUSTIC®*

- Conceals minor sub-floor irregularities
- Greatly reduces impact sound
- Always lays flat and will not slip during installation
- Works extremely well over radiant heated floors
- Resists mold, mildew and fungus growth
- Enhances underfoot comfort



For more information about DURACOUSTIC®, contact us today toll-free at **800-295-4126** or visit our web site:

**www.duracoustic.com**

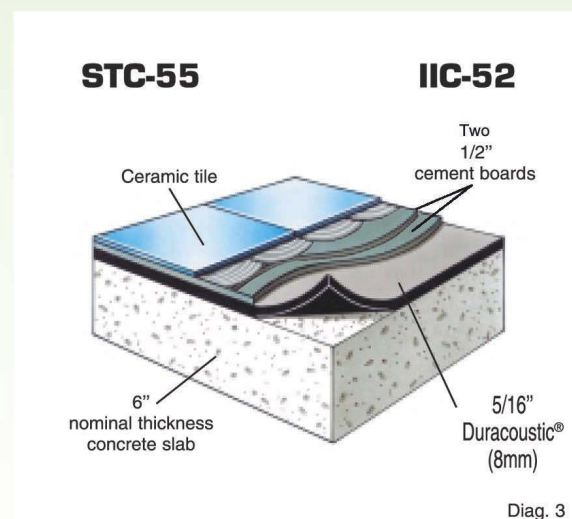
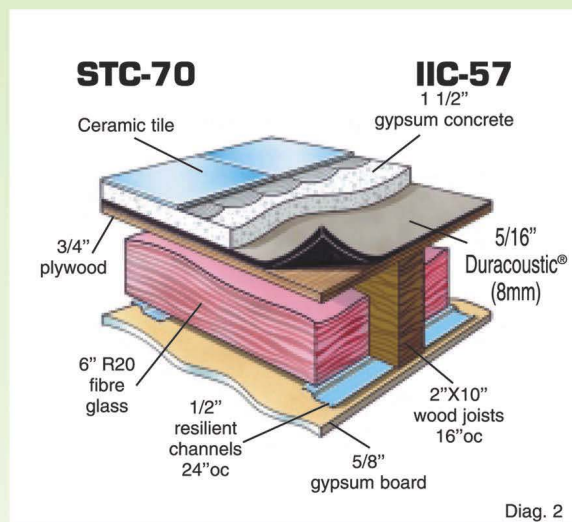
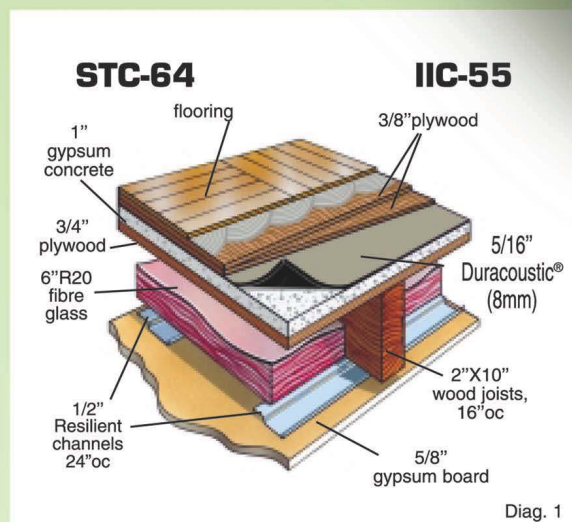
For Free information circle 9

**DURA UNDERCUSHIONS LTD.**

Tel: (514) 737-6561 • Fax: (514) 342-7940 • E-mail: info@duracushions.com

MADE IN CANADA

Visit us at IBS Booth #W2489







**FORTIFIBER**



**MITTEN**



**FI-FOIL**



**DUPONT TYVEK THERMAWRAP**



**LOUISIANA PACIFIC TECHSHIELD**

## FORTIFIBER BUILDING SYSTEMS

The WeatherSmart housewrap from the Fortifiber Building Systems Group delivers balance between breathability and water protection. The product can be used in any climate and behind most exterior claddings.

The WeatherSmart design has its roots in advanced building science research on weather-resistive barrier performance. The nonwoven, nonperforated wrap employs an advanced, breathable polymer technology that is resistant to surfactants. It provides an air barrier that is durable and UV stable.

800-773-4777 / [www.fortifiber.com](http://www.fortifiber.com)

Circle No. 314. / Booth W0791

## LOUISIANA PACIFIC TECHSHIELD

LP TechShield radiant barrier sheathing is cost-effective way to increase energy efficiency, while creating a more comfortable living environment.

TechShield installs like regular roof sheathing and prevents up to 97 percent of the sun's radiant heat from entering the attic, so homes stay cooler and air conditioning units operate more efficiently.

615-986-5600 / [www.lpcorp.com](http://www.lpcorp.com)

Circle No. 315. / Booth W1559

## DUPONT TYVEK THERMAWRAP

DuPont Tyvek ThermoWrap is designed specifically to help provide better protection against moisture and mold - with higher UV resistance. As a low-E surface, Tyvek ThermoWrap helps increase the R-value of insulation for greater comfort and better energy efficiency throughout the year.

[www.tyvek.com](http://www.tyvek.com)

Circle No. 316. / Booth W1571

## MITTEN

The InsulPlank and Sentry Plus foam-back cladding lines from Mitten provide up to 20 percent greater System R-4 Insulation Value. The Fullback Thermal Support System insulation is securely bonded to the exterior polymer of the vinyl siding — expanding and contracting as a single, solid unit. The laminated foam backer also increases the strength and rigidity of the exterior wall a full 300 percent for greater impact-resistance.

519-442-6375 / [www.mittenvinyl.com](http://www.mittenvinyl.com)

Circle No. 317. / Booth S11067

## FI-FOIL COMPANY

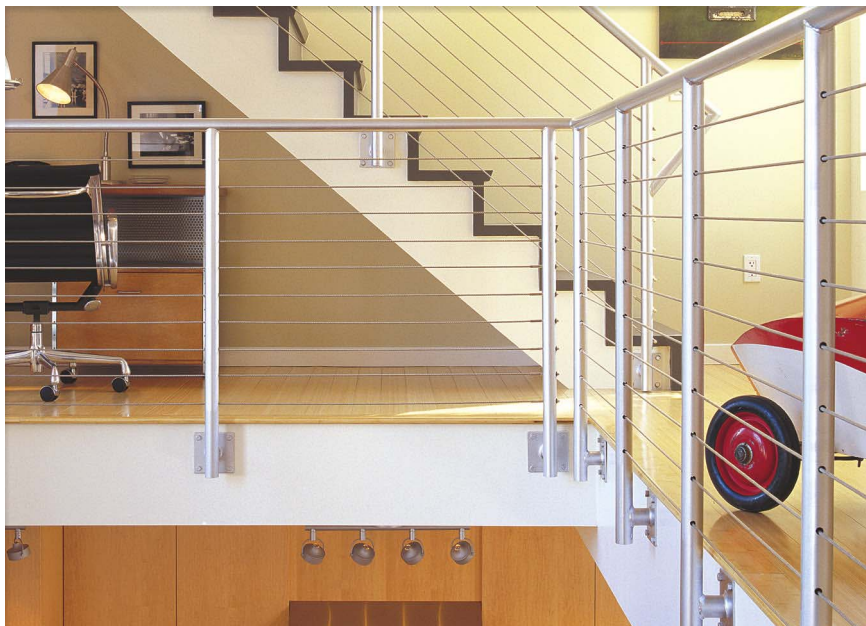
Fi-Foil provides radiant insulation solutions for building applications, such as masonry walls, metal buildings and attic radiant barriers. Its Silver Shield Radiant Barrier Program can significantly increase builder profits, while providing a cost-effective upgrade of standard insulation packages to save energy and boost comfort. Silver Shield will reduce attic temperatures up to 30 degrees, lower temperatures in garages and porches, and improve duct and insulation performance.

800-448-3401 / [www.FiFoil.com](http://www.FiFoil.com)

Circle No. 318. / Booth S10745



# Interior Products



**CABLE RAIL BY FEENEY**



**CROWN HERITAGE**



**HEAT & GLO**



**KÄHRS INTERNATIONAL**

**WAUPACA ELEVATOR**

## **CABLE RAIL BY FEENEY**

New, all-stainless steel QuickConnect-SS fittings from CableRail by Feeney make cable-railing installations easier and more beautiful than ever. Available for 1/8-inch, 3/16-inch and 1/4-inch cables, QuickConnect-SS fittings feature one-way, automatic-locking jaws for incredibly fast cable installations with very clean lines. Just slide the fitting on, pull the cable taut and let it go — the fitting locks on, and no special tools are needed. Plus, the slender design means you can easily conceal the fittings in the end posts and never have to waste time drilling big holes. Special Colored or Stainless End Caps cover, protect and finish the exposed ends. QuickConnect-SS fittings are included in Feeney's CableRail Standard Cable Assemblies. 800-888-2418 / [www.cablerail.com](http://www.cablerail.com) Circle No. 319. / Booth S10664

## **KÄHRS INTERNATIONAL**

Kährs Wood Flooring's Oak Oregon has beveled edges and a brushed surface that complements the wood's natural structure. A durable matte finish further emphasizes the beauty of the timber. 407-260-9910 / [www.kahrs.com](http://www.kahrs.com) Circle No. 320. Booth S12713

## **HEAT & GLO**

The new Perennia gas fireplace from Heat & Glo enables homeowners to treat themselves to a roaring fire in any climate at any time of the year. Using a patented HeatLogic heat management system, the Perennia is the first fireplace that allows homeowners to adjust the amount of heat radiating from the fireplace without diminishing flame height or quality. 888-427-3973 / [www.heatnglo.com](http://www.heatnglo.com) Circle No. 321. / Booth W1159

## **CROWN HERITAGE**

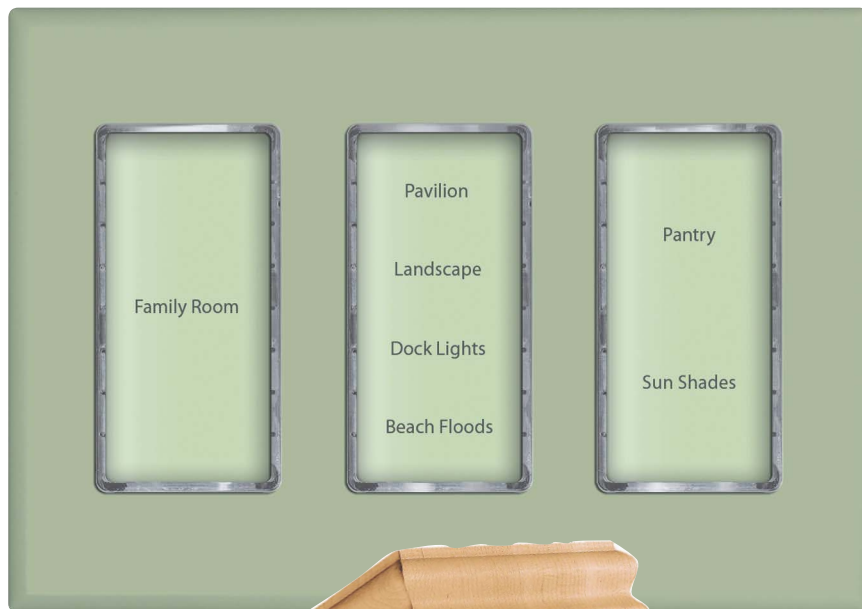
Crown Heritage, a manufacturer of wood and wrought iron stair systems, has developed a new patent-pending alignment system and corresponding proprietary tool, EasAlign, for stair system railing and fitting installations. The EasAlign system works with all Crown Heritage stair systems and features invisible magnetic fastening elements developed by the Swiss company, Invis. This method for connecting stair parts eliminates wood plugs, nuts, bolts and glue. EasAlign ensures a smooth, strong, completely aligned railing connection for Crown Heritage stair systems, and eliminates misfits between handrails and fittings. The EasAlign tool provides the exact method for drilling the fittings for the system, and the system itself offers an extra high shear strength method of installing handrails to fittings. Using this system makes installations up to 50 percent faster than rail bolt connections. It is also cleaner, with no glue being used

and no sanding required. 800-745-5931 / [www.crownheritage.com](http://www.crownheritage.com) Circle No. 322. / Booth W0343

## **WAUPACA ELEVATOR**

The new Paca-Glide residential elevator from Waupaca Elevator Company offers dramatically changed mechanics. The need for a winding drum elevator machine room has been eliminated, with the drive unit now positioned on top of the rails. The split rail system also provides for a smoother more stable ride. A new and innovative wiring system reduces the installation time, yet provides for features usually found only on larger more expensive elevators. 800-238-8739 / [www.waupacaelevator.com](http://www.waupacaelevator.com) Circle No. 323. / Booth W5785





**COLORADO VNET**



**ENKEBOLL**



**COOPER LIGHTING**



**CROSSVILLE**

## COOPER LIGHTING

MediaSync Home Networking and Control Products from Cooper Lighting feature a modular design and built-in connectivity that supports whole-house voice, audio, video, high-speed Internet, networking, security, lighting, power protection for a well-networked home. Plug-and-play wiring makes it easy to relocate televisions, phones, computers, fax machines and other electronics without recabling.

MediaSync "future-proofs" a home for changing needs and lifestyles, as well as rapidly emerging home technologies for communications, entertainment, convenience and more.

MediaSync eliminates costs for multiple service connections — easy Internet access, convenient multi-line phones, and even a state-of-the-art home office — while allowing multiple users simultaneously.

770-486-4800 / [www.cooperlighting.com](http://www.cooperlighting.com)

Circle No. 324. / Booth W291

## CROSSVILLE

Crossville introduces Color Blox Mosaics, three-inch-square Porcelain Stone tile that is a 1/4-inch thick, dot-mounted and available in 20 colors. Color Blox Mosaics encompass neutrals and darks, such as silvery "Slinky," bone "Sand Box," bluish-black "Night Night," and dark lime "Mr. Green Jeans." Its palette also includes colors, such as "Yellow Brick Road," "Limeade," "A Day at the Beach" blue and "Caboose" red.

The line was designed to coordinate with Color Blox, the company's large-unit tile that is available in multiple sizes and trim pieces, as well as with multiple carpet products from Bentley Prince Street, a carpet manufacturer. Crossville's Accent Innovations offers complementary glass, metal and natural stone tile, trim and borders to accent Color Blox Mosaics.

800-221-9093 / [www.crossvilleinc.com](http://www.crossvilleinc.com)

Circle No. 325. / Booth W143

## ENKEBOLL DESIGNS

Enkeboll Designs' Vineyard Collection is one of the newest additions to Enkeboll's popular lines of architectural woodcarvings for interior design. The Vineyard Collection features a new variety of grape and vine woodcarvings. Meandering vines, asymmetrical grapes, and flowing leaves characterize this distinctive collection of corbels, moldings and onlays from other, more traditional, grape-themed architectural elements.

"The new Vineyard Collection reflects the company's commitment to continuous development of new products that appeal to the evolving interests of our broad customer base," says Stephen Anderson, Enkeboll chief executive officer.

800-745-5507 / [www.enkeboll.com](http://www.enkeboll.com)

Circle No. 326. / Booth S12313

## COLORADO VNET

Colorado vNet is introducing an electronic Touchpad that redefines the way homeowners interact with their vNet Home Automation System. Sleek, stylish and contemporary, the TP1-1D Touchpad uses capacitive technology to allow home integrators to carry just one product with dozens of key configurations, rather than the multiple keypads they previously had to carry to meet customer requirements. A key attribute of capacitive technology is its ability to react and execute commands, based on a single touch or the duration of a touch. A single tap can switch lights on and off, control a motor (i.e. drapes, ceiling fans or pool covers), or control a pre-programmed event schedule. A longer touch can dim lights up and down, eliminating the need for multiple buttons to control related functions.

970-202-3700 / [www.coloradovnet.com](http://www.coloradovnet.com)

Circle No. 327. / Booth S10485



# Interior Products

## Cabinets



**HOMECREST**



**WELLBORN**



**WHITE RIVER**



**MERILLAT CIVANO**



**ATLAS HOMEWARES**

### WHITE RIVER HARDWOODS

White River Hardwoods hand-carved ornaments for cabinetry, fine furnishings, libraries and well-appointed interiors are distinguished by their hand-carved imperfections and hand tooling that yield a deeper cut.

White River's in-house designers created this line in response to consumer demand for classical elements. These Old World carving styles were inspired by historical European buildings, antique furnishings and other architectural elements. The ornaments range from delicate, petite motifs for cabinetry and furniture to robust proportioned stylings for larger applications.

800-558-0119 / [www.mouldings.com](http://www.mouldings.com)  
Circle No. 328. / Booth W7213

### WELLBORN CABINET

Wellborn Cabinet's new Mt. Vernon Arch door style with a Cocoa finish will be available in four standard and four specialty finishes as part of Wellborn's Premier and WoodCraft Series. The Mt. Vernon Arch features detailed, door-and-drawer front edges with a solid wood, raised center panel.

256-354-7151 / [www.wellborn.com](http://www.wellborn.com)  
Circle No. 329. / Booth W2571

### HOMECREST CABINETRY

The new Rainier features a streamlined look that combines modern, geographic shapes and the warmth of solid wood with durable, stable engineering. Its wood-veneer cabinet doors are specially designed to withstand high humidity, so homeowners need not worry about the expansion and warping problems common with many other wood cabinetry products.

[www.homecrestcab.com](http://www.homecrestcab.com)  
Circle No. 330. / Booth W1929

### MERILLAT

Merillat is expanding its Merillat Masterpiece line with two new door styles:

■ Civano: This pillow-type of square door, available in maple, cherry, hickory and oak, has a mitered molded-frame construction with a raised panel and an outside bead profile, as well as a five-piece drawer front.

■ Caliseo: This Tuscan-inspired door has a solid mitered door frame, a full overlay style, a five-piece mitered front inset and a five-piece drawer front. It is also available in maple, cherry, hickory and oak. Glaze finishes will offer a dramatic and distinguishing look.

[www.merillat.com](http://www.merillat.com)  
Circle No. 331. / Booth W1101

### ATLAS HOMEWARES

The new Paradigm line from Atlas Homewares is a collection of trendy decorative hardware, featuring black leather, black crocodile leather and washable cocoa brown suede. Enhanced with polished chrome and brushed nickel accents, Paradigm's ultra-modern look is ideal for adding an unexpected and trendy touch of class to kitchen and bath cabinetry. Paradigm features a range of cabinet and bath hardware styles. The cabinet hardware includes a square knob; a 3-inch pull; and a 7-inch pull. From the bath hardware collection, there is a toilet paper holder and a shelf.

800-799-6755 / [www.atlasmhomewares.com](http://www.atlasmhomewares.com)  
Circle No. 332. / Booth S10856





“Then”

Average  
Annual  
Energy Cost  
**\$2,731.04**

## Lower Energy Bills: Renovate With Dryvit EIFS

“Now”

Average  
Annual  
Energy Cost  
**\$2,088.84**



Renovate With A Dryvit Residential EIF System. A Dryvit EIF system saved Joan and Terry Riffel of Highland, Illinois more than 20 percent on their heating costs when they renovated their cedar-sided home with a Dryvit EIFS exterior\*. At today's prices, that translates into more than \$600 saved a year.

Dryvit's unique insulation outside of the wall cavity prevents heat and cooling loss through the studs, wrapping the home in a seamless layer of insulation. For today's increasingly energy-conscious consumer that is a great selling point for builders and remodelers.

To find out how Dryvit's energy efficiency can help increase your business, call 1-800-4DRYVIT or visit us at [www.dryvit.com](http://www.dryvit.com).



\*For more details, visit [www.dryvit.com](http://www.dryvit.com).  
© Dryvit Systems, Inc. 2005

For Free information circle 10

An **RPM** Company



# Structural



APA ENGINEERED WOOD



DOW AGROSCIENCES



NISUS



TEMPLE INLAND



SYGENTA

## TEMPLE-INLAND

Temple-Inland has introduced machine stress-rated lumber. Temple-Inland lumber is intended for use in trusses, wall components and laminated beam manufacturing, where design specifications require tested mechanical properties. Available in 2x4 through 2x10 dimensions, with lengths ranging from eight to 20 feet, Temple-Inland MSR lumber will initially be offered with a tested value of 2400f-2.0E. Temple-Inland uses the physical bending stress process for product consistency. 800-231-6060 / [www.templeinland.com](http://www.templeinland.com)  
**Circle No. 333. / Booth W471**

## APA — THE ENGINEERED WOOD ASSOCIATION

With the APA Narrow Wall Bracing Method you can build homes with:

- the architectural flexibility of 16-inch-wide, narrow-wall segments
- the structural integrity of code-approved bracing

- the ease of site-built, hold-down-free construction

The APA method permits narrow 16-inch segments next to garage doors, large windows and sliding glass doors. This bracing option frees up wall space for more windows and doors, giving the interior an open and lighter ambience. 253-565-6600 / [www.apawood.org/bracing](http://www.apawood.org/bracing)  
**Circle No. 334. / Booth W3371, Show Village**

## NISUS

BoraShield offers Bora-Care or Bora-Care with Mold-Care application coverage for registered Pest Control Professionals on four levels:

- Level I includes a subterranean termite warranty of 12 years.
- On Levels II and III, the warranty extends to whole-house treatments and adds coverage for drywood termites, wood-destroying insects and decay fungi.
- Levels I-III under the BoraShield program will cover product replacement,

labor and damage repair up to \$2,500 for a period of 12 years.

- The mold protection in Level IV is for one year and is product replacement only. Bora-Care from BoraShield carries a 12-year warranty that includes damage repair. 800-264-0870 / [www.nisuscorp.com](http://www.nisuscorp.com)  
**Circle No. 335. / Booth S11713**

## DOW AGROSCIENCES

The Sentricon Termite Colony Elimination System provides continuous defense against termites with ongoing service by an authorized operator. The Sentricon System is installed after final grade, so you won't experience scheduling delays or disruptions because of weather or the need to re-treat. Unlike liquid chemical treatments, the Sentricon System offers reduced risk to personnel or site exposure, contamination, spillage or leakage. Just a few grams of termite bait are used when and where needed. 800-255-3726 / [www.sentricon.com](http://www.sentricon.com)  
**Circle No. 336. / Booth W2543**

## SYGENTA PROFESSIONAL PRODUCTS

Sygenta's Impasse Termite Blocker allows builders and pest management professionals to offer pre-construction termite protection for specific areas of new homes. A long-term and environmentally favorable termite solution, Impasse specifically targets utility penetrations and bath-trap areas from termite invasion, sealing long-term protection right into the foundation. Created to meet builder demand in Texas and Florida, the 6-inch blocker is intended for wherever 6-inch PVC piping is used as an exhaust vent for barbeque ranges, as well as for heating and cooling ducts. The pipe is installed through the slab foundation. 847-519-9150/  
[www.sygentaprofessionalproducts.com/ppm](http://www.sygentaprofessionalproducts.com/ppm)  
**Circle No. 337. / Booth S11431**



# Preserve Your Investment

With Premium Building Products That Protect



Visit Booth #W7033 at the IBS Show

**Complete Weatherproofing and Waterproofing Systems for New Construction, Remodeling and Commercial Construction.**

- Waterproofing Membranes
- Building Tapes
- Anti Fracture and Sound Control Floor Underlayments
- Roofing Underlayments
- Energy Saving Products

**1955 S. Cherokee St. Denver, CO 80223 • 1-800-759-9727 • [www.protectowrap.com](http://www.protectowrap.com)**

For Free information circle 11



# Construction Equipment & Tools

## MAKITA U.S.A.

The new Makita 18V LXT Series uses a four-pole maximum torque motor to deliver more power with less weight and a smaller size. Using lithium-ion battery technology, energy is generated every 90° — rather than 180° — on the magnetic field, and the motor is supported with two steel ball bearings for more durability. The tool's shape provides even pressure while adding more control. Built-in, high-impact L.E.D. lights operate independently from the tool to illuminate the work area.

800-462-5482 / [www.makitatools.com](http://www.makitatools.com)

Circle No. 307. / Booth W229

## BOBCAT COMPANY

The Bobcat S205 skid-steer loader is the perfect all-around jobsite machine for builders. Its 2,050-pound-rated operating capacity can easily handle pallets of building materials. In addition, the S205's 61-horsepower turbo diesel engine, coupled with more than 65 front-mounted attachments, can handle the widest range of jobsite tasks: clearing brush, demolishing existing structures, installing erosion controls, sweeping streets, stockpiling soil, excavating footings, grading, trenching lines, pumping concrete, auguring holes for fences and decks, landscaping and more.

866-823-7898 x567 / [www.bobcat.com/AA567A](http://www.bobcat.com/AA567A)

Circle No. 308. / Booth W2127



BOBCAT



MAKITA

## The *Proof* Is On *Our* PEX

VANEX PEX [NSF-pw] CL-R/CL-TD ASTM F-876/877/F2023]

VANEX PEX [NSF-pw] CL-R/CL-TD ASTM F-876/877/F2023]



Vanex<sup>®</sup> PEX was the **first** PEX tubing to achieve the new NSF-CL listing for both traditional domestic and recirculating plumbing systems. This certification confirms Vanex PEX provides:

- **Durability**
- **Reliability**
- **Proven Performance**

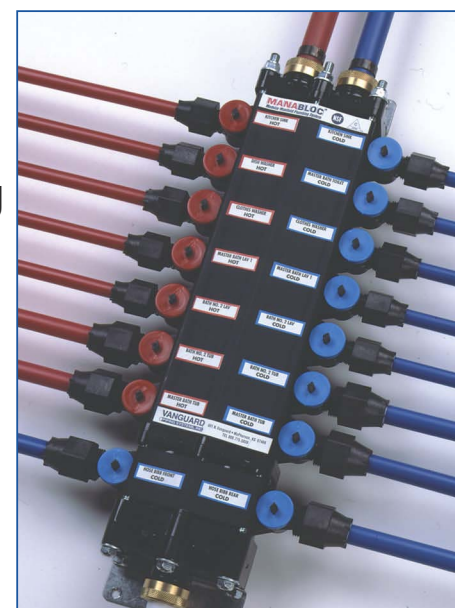
and a level of chemical resistance that many other PEX producers cannot match. The proof is on our PEX, is it on yours?



1-800-775-5039 • (620) 241-6369  
[www.vanguardpipe.com](http://www.vanguardpipe.com)

Vanguard's MANABLOC<sup>®</sup> Manifold Distribution System and Vanex PEX for hot and cold plumbing supply systems provide:

- Fast hot water delivery
- Balanced flow so you can turn on several fixtures without noticing a dramatic change in pressure
- Individual valves for each fixture
- Only one-third the fittings of conventional plumbing



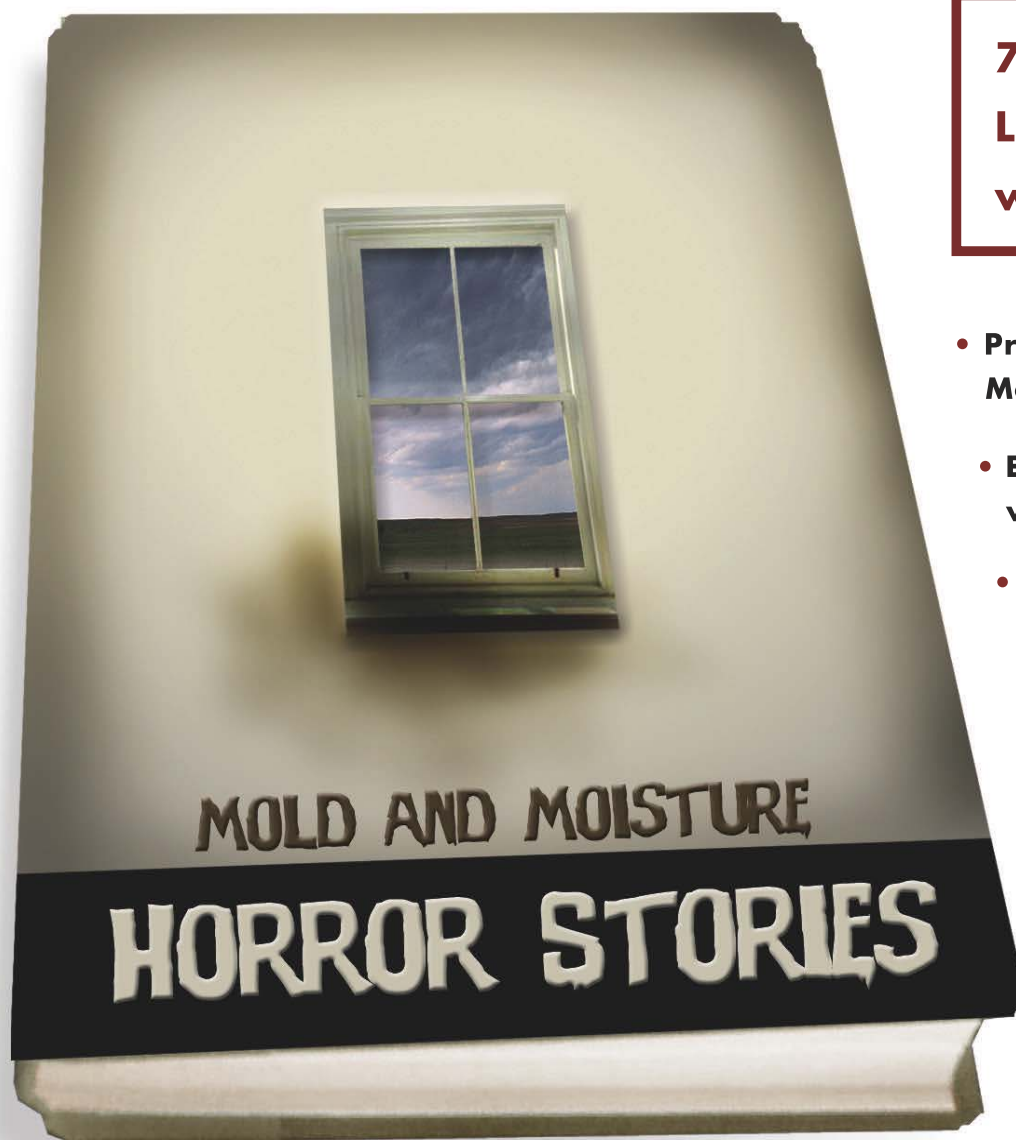


# Fear No More



Premium Building Products  
That Protect

**The Protecto Sill Drainage System™**  
offers maximum protection from moisture intrusion.



**70% of Construction Defect Litigation can be caused by water intrusion. \***

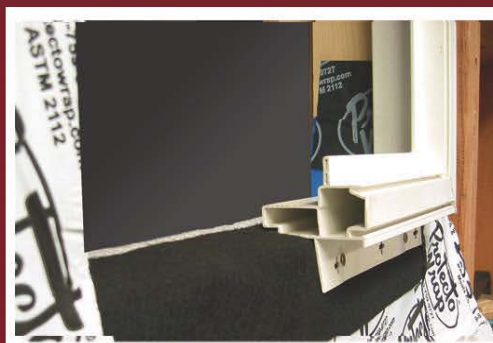
- Protects and reduces Window Manufacturers' and Builders' liability.
- Eliminates costly call backs due to window leaks.
- Forms a waterproof barrier under Wood, Vinyl and Aluminum windows.
- Comes with Protecto Wraps lifetime limited warranty.
- Can be custom fitted and cut to accommodate any window opening.
- Easy to install

*\* according to La Jolla Pacific, LTD.,  
Construction Consultants*

The **Protecto Sill Drainage System™** combines Protecto Wrap's advanced peel-and-stick adhesive with positive-sloped, closed-cell foam that ensures any water or condensation found inside window openings will be directed to the outside weather plane of the structure.

**Visit Booth #W7033 at the IBS Show**

The Only Peel & Stick Waterproofing  
Flexible Pan System To Exceed  
Architectural Testing Levels of ASTM Air  
Infiltration E283-99 And Water Penetration  
E331, E547 Of Exterior Windows.



For Free information circle 13

**1955 S. Cherokee St. Denver, Co 80223 • 1-800-759-9727 • [www.protectowrap.com](http://www.protectowrap.com)**



For more information and complete product warranties, see www.jeld-wen.com. ©2005 JELD-WEN, Inc. JELD-WEN and Reliability for real life are registered trademarks of JELD-WEN, Inc., Oregon, USA. All other trademarks are the property of their respective owners.



*We were energy efficient before it was cool. Or hot.*

Premium Wood French Door



JELD-WEN offers a wide range of windows and doors that include Low-E glass.



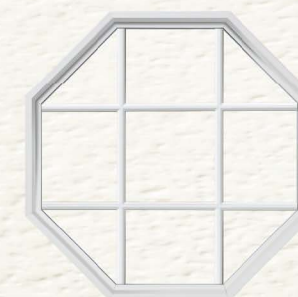
Steel 8-Panel Center Arch Door



Wood Casement Window



Courtyard Collection Steel Door



Vinyl Geometric Window



Premium Wood French Door

For years, homeowners have relied on JELD-WEN for energy efficient windows and doors. Now Low-E glass comes standard in our wood windows and patio doors, and in our Courtyard Collection steel doors. It's also an option in our vinyl or aluminum windows, and in our Premium Wood doors. Low-E is just one of a variety of energy-saving choices you can offer from a company that's been an ENERGY STAR® Partner since 1998. To learn more about any of our reliable windows and doors, call 1.800.877.9482 ext. 4214, or go to [www.jeld-wen.com/4214](http://www.jeld-wen.com/4214).

**RELIABILITY** *for real life*®

**JELD-WEN**  
WINDOWS & DOORS

For Free information circle 14



See us at IBS Booth W3571

# Fight basement moisture



with  
a powerful  
combination.



**MOISTURE OUT. | CONFIDENCE IN.<sup>SM</sup>**

The TUFF-N-DRI two-part system  
beats three sources of moisture:  
leaks • seepage • condensation

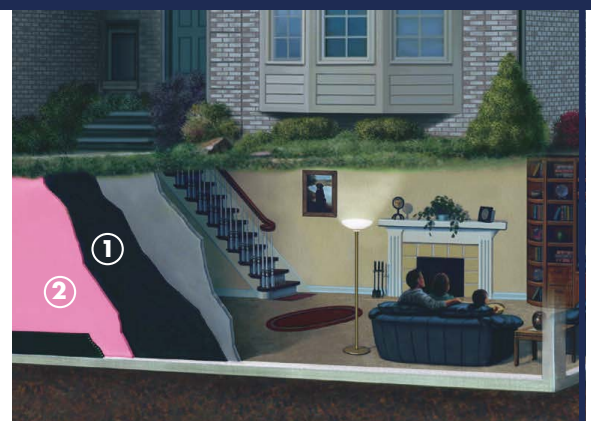
**MOISTURE OUT.** Excess moisture can be brutal on the homes you build. Moisture can create damp, uncomfortable living environments. Make air conditioners, heaters and dehumidifiers use more energy. Damage drywall, carpeting and furnishings. Even weaken structural materials.

But you can fight back with the one-two punch of TUFF-N-DRI® Basement Waterproofing System. This unique black-and-pink combination defends against three main sources of moisture from basement walls, by preventing leaks, stopping seepage and reducing interior condensation.

**CONFIDENCE IN.** By fighting basement moisture three ways, TUFF-N-DRI gives you the confidence to transform lower level space into luxury living spaces. A dry, comfortable basement can increase your profit potential – and build your reputation for future referrals. And TUFF-N-DRI is so strong, it's backed by a 30-year transferable performance warranty.\*

So fight basement moisture and champion your business with TUFF-N-DRI – North America's #1 brand of new basement waterproofing. For details, call or visit our Web site.

**800-DRY-BSMT • TUFF-N-DRI.com**



[1] The black, flexible membrane of TUFF-N-DRI is spray-applied to seamlessly seal out water leaks and seepage.

[2] The pink WARM-N-DRI® Foundation Board insulates basement walls on the outside to reduce condensation on the inside. WARM-N-DRI board also helps drain water away from basement walls to relieve hydrostatic build-up.



\*Visit TUFF-N-DRI.com for full details on our 30-year performance warranty.



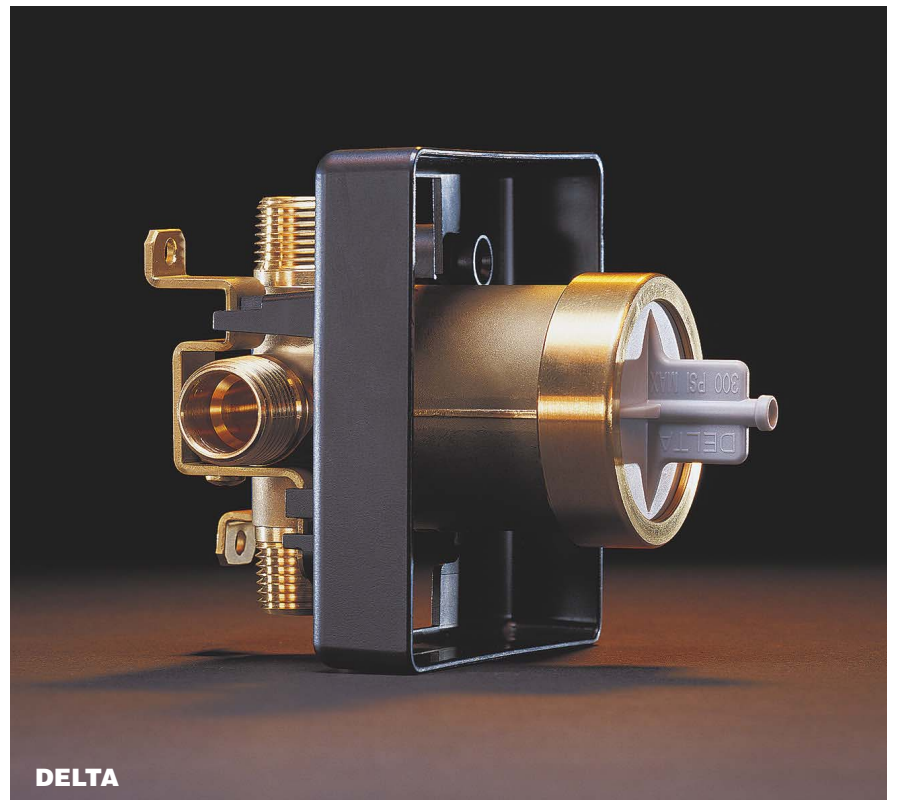


**STERLING**

**CAMBRIA**



**SHOWHOUSE BY MOEN**



**DELTA**



**MTI WHIRLPOOL**

## STERLING

Sterling single- and double-basin, undercounter kitchen sinks are created for everyday use. Crafted from a single sheet of stainless steel, these sinks provide a clean and seamless look. They coordinate nicely with solid-surface countertops — granite, quartz, fabricated solids and hardwoods — as well as stainless steel appliances. Cleanup tasks are faster and easier, because there are no ledges for water and debris to collect.

### Product Specifications

- Series 11406 30 x 16 x 8 inches Double-Equal Basin 20 gauge
  - Series 11407 29 x 15 x 8-inches Double-Equal Basin 18 gauge
  - Series 11408 29 x 15 x 7½-inches Single Basin 19 gauge
- 800-STERLING / [www.sterlingplumbing.com](http://www.sterlingplumbing.com)  
Circle No. 338. / Booth W1301

## CAMBRIA

Cambria's has expanded its quartz countertop offering with the addition of five new colors to its Quarry Collection. The names — Ashford, Chatham, Lancaster, Somerset and Sutton — were inspired by cities and landscapes located throughout the British Isles. Two of the new colors, Sutton and Lancaster, are lighter shades, complementing the Quarry Collection's existing earth tone products. Ashford, Chatham and Somerset offer medium to darker shades with natural quarried stone variations.

866-CAMBRIA / [www.CambriaUSA.com](http://www.CambriaUSA.com)  
Circle No. 339. / Booth W1971

## SHOWHOUSE BY MOEN

The ShowHouse brand of faucets from Moen is 20 percent larger to provide more water coverage. The new showerhead features the exclusive Immersion Rainshower Technology that offers pressurized water delivery. Immersion Technology channels water, then releases

it in a straight, steady stream that envelops the entire body. Also, new from ShowHouse at IBS: new performance-enhanced body sprays on the vertical spa and a brushed nickel for the Solace Collection.

877-MOEN-SH1 / [www.showhouse.moen.com](http://www.showhouse.moen.com)  
Circle No.340. / Booth W1901

## DELTA FAUCET COMPANY

A new tub/shower valve system from Delta Faucet simplifies installation by permitting functional and stylish trim changes without having to change the valve in the wall. The new MultiChoice Universal Valve offers three function options: single- and dual-function pressure balance, as well as a new dual-function thermostatic valve cartridge. Delta offers the ability to install both pressure balance and thermostatic cartridges in one valve.

The Universal Valve works with any of the Delta Monitor pressure balance

tub/showers.

The MultiChoice Universal Valve allows for easy shower upgrades, eliminates the wrong valve from being installed and uses existing Delta brand trim packages.

800-345-DELTA / [www.deltafaucet.com](http://www.deltafaucet.com)  
Circle No. 341. / Booth W1101

## MTI WHIRLPOOLS

A new line of glass shower enclosures from MTI is a true frameless design. The absence of headers gives a sleek, contemporary look and allows easy entry and exit, even for tall persons. The enclosure has a new curved-front shower base that provides extra elbowroom while showering. There are 25 different models available for the luxury market. MTI shower enclosures are durable and safe.

800-783-8827 / [www.mtiwhirlpools.com](http://www.mtiwhirlpools.com)  
Circle No. 342. / Booth W174



# Kitchen & Bath

## JENN-AIR



## DANZE

## PITTSBURGH CORNING



## PITTSBURGH CORNING

Pittsburgh Corning's standard fit glass block shower is the most recent addition to its line of pre-designed glass block showers systems, including the Walk-in, neo angle and classic. The new, easy-to-install system features pre-fabricated glass block panels. Once the base and panels are in place, the project is completed by adding a grout finish to the panel joints and installing a traditional shower door. This pre-designed glass block shower still allows homeowners many choices in style and color. 800-624-2120 / [www.pittsburghcorning.com](http://www.pittsburghcorning.com)  
**Circle No. 343./Booth W5085**

## DANZE

Danze has launched the South Sea Collection, a bamboo-inspired line styled for the growing popularity of natural textures and finishes. The collection will be available in early 2006 as a powder room option. The South Sea Collection is available in centerset, mini-widespread,

widespread and deck-mounted vessel filler faucets, as well as a complete line of matching bath accessories. The collection is available in brushed nickel and Danze's newest finish, distressed bronze. 877-530-3344 / [www.danze.com](http://www.danze.com)  
**Circle No. 344. / Booth W3449**

## LASCO BATHWARE

Lasco Bathware has partnered with the Los Angeles design firm, Blue Design, to develop five contemporary baths for its new Contours luxury brand. The new Contours' Radius Series offers simplistic, minimalist styling and sophistication. Inspired by design elements of the BMW Z4 sports car, the baths feature soft concave surfaces, pearlescent finishes and surface-tension details. Quiet, yet powerful, the Radius Series baths feature an air-and-water hydrotherapy system, an inline heater and one-touch functionality. Ergonomic details, such as lumbar support and head and arm rests, were also critical to the design. The Radius



## LASCO BATHWARE



## HANGSGROHE

Series includes Euro-styled acrylic showers, which come in 4- and 5-foot widths, and are more than 6 feet tall.

**Circle No. \_\_\_\_ .**  
 714/993-1220/[www.lascobathware.com](http://www.lascobathware.com)  
**Circle No. 345. /Booth W1083**

## JENN-AIR

Jenn-Air's new slide-in range models combine performance with style, including the Floating Glass finish. These new ranges include completely re-engineered downdraft and updraft gas models, a Euro-style stainless steel dual-fuel model, and a sleek "Gas on Glass" look. The MultiMode convection system delivers ideal results when baking, roasting, drying or thawing. A new convection element improves heat distribution and airflow, making the Jenn-Air slide-in ranges an ideal choice for serious home gourmets.

800-JennAir / [www.jennair.com](http://www.jennair.com)  
**Circle No. 346. / Booth W501**

## HANGSGROHE

The Axor Starck Waterwall is designed for luxurious minimalism, with its flat rectangular design and use of vertical and horizontal surface space. It is packed with integrated elements, including:

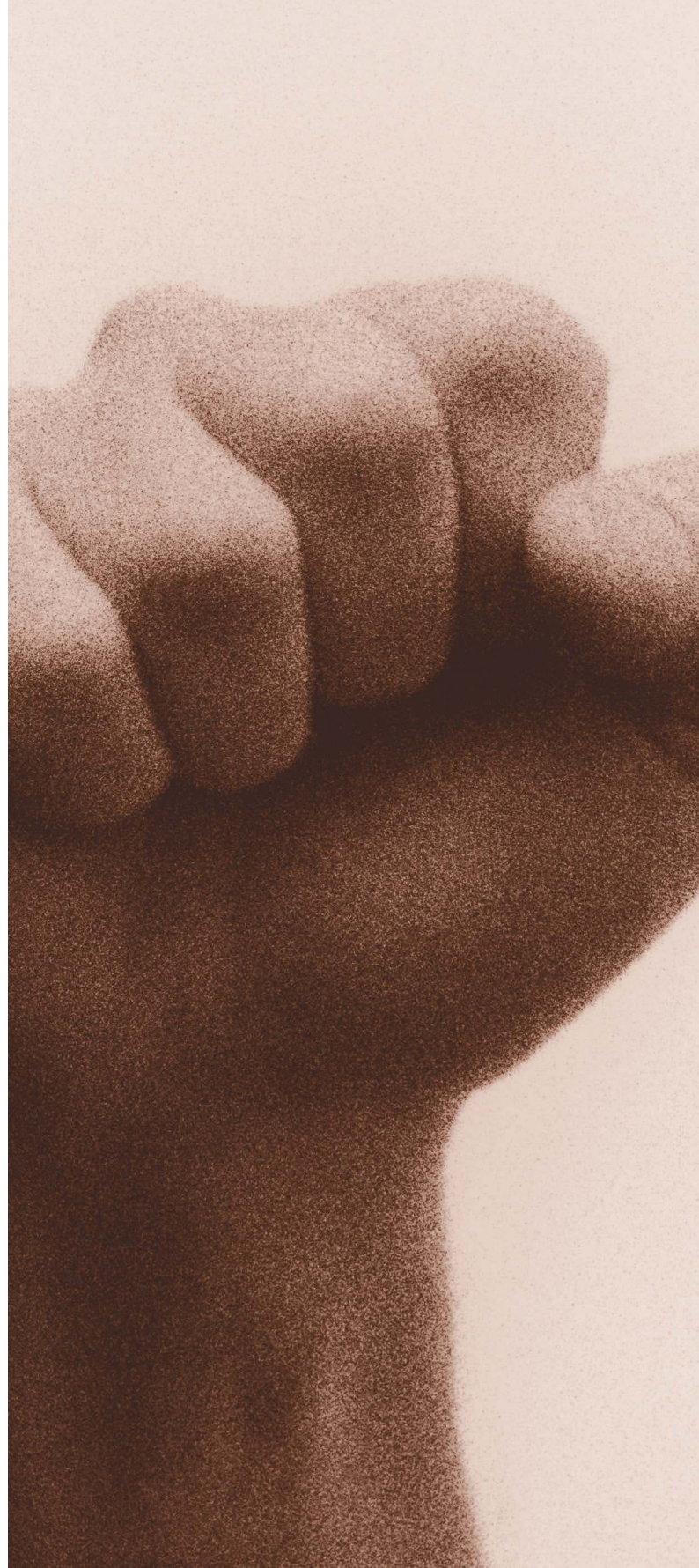
- a thermostat valve for perfect temperature adjustment
  - three chrome valves hidden on the side for operating functions separately or simultaneously
  - six body sprays for full-body rejuvenation
  - a wide-pattern showerhead (10 inches) with air-injection technology for high quality, deluxe showering
  - an Axor Starck handshower and holder built into the side, so that the hose is conveniently tucked away
  - shelves that are visible only from the side, offering convenient storage space for various shower items
- 800-719-1000 / [www.hansgrohe-usa.com](http://www.hansgrohe-usa.com)  
**Circle No. 347. /Booth W1101**



# Knowledge is power.

[www.getmoldfacts.com](http://www.getmoldfacts.com)

Despite claims to the contrary, controlling mold begins by controlling moisture through best building practices. Adding the right protection in the right places is the other critical aspect of the equation. Only USG offers a full line of products that provides superior mold resistance throughout all key areas of a house. You control moisture. We help control mold. Both are simple facts. Stop by USG show booth #W1293 to learn more.  
For Free information circle 16



Only USG offers a full portfolio of mold-fighting products



**SHEETROCK®**  
Gypsum Panels

humitek®

**Humid areas**  
Painted finishes in bathrooms, basements, garages, kitchens



**FIBEROCK®**  
Panels

AQUA  
TOUGH

**Moist/Wet areas**  
Tile backer for walls, floors, ceilings; floor underlayment



**DUROCK®**  
Cement Board

**Wet areas**  
Premium tile applications for floors, walls, ceilings



Control moisture. Control mold.

©2006, USG Corporation





## moderna<sup>®</sup> LOGO CEILINGS

*Add ambiance and character to any room!*

- ◆ Glueless laminate planks
- ◆ Beautiful look and warmth of wood
- ◆ Available in five rich patterns
- ◆ Installs easily with clip system
- ◆ Details: [www.bhkmodernaceilings.com](http://www.bhkmodernaceilings.com)



*The Proven Leader  
in Glueless Technology*

**800-663-4176**  
For Free information circle 17

## moderna<sup>®</sup> FLOORING

LAMINATE ◆ CORK

- ◆ Faster, cleaner glueless installation
- ◆ Over 50 colors & patterns
- ◆ Matching molding & accessories
- ◆ Tight seams, strong joints
- ◆ Details: [www.bhkuniclic.com](http://www.bhkuniclic.com)

UNICLIC UNICLIC SYSTEM



# Lighting



**THOMAS LIGHTING**



**LEVITON ACENTI**



**BELLACOR LIGHTING**



**HANOVER LANTERN**



**HOME AUTOMATION**

## VIRTUAL SHOWROOM BELLACORPRO

BellacorPro has developed the Virtual Lighting Showroom (VLS), a digital lighting catalog that empowers builders to work side-by-side with customers in their own design centers, selecting and purchasing lighting for new homes. By leveraging convenient Internet content, the BellacorPro VLS offers easy access to 500,000 products from 700 manufacturers. Builders can swiftly turn lighting sales from a business expense into a true profit center, eliminating the practice of offering hefty purchasing allowances for use at third-party lighting showrooms. 877/436-6285/[www.bellacorpro.com/VLS](http://www.bellacorpro.com/VLS) Circle No. \_\_\_\_ /Booth S12589

## LEVITON MANUFACTURING

The Acenti Collection is a line of electrical devices. Leviton teamed with renowned design firm IDEO — designers of the original mouse for Apple Computer, the Palm V handheld computer, the Leap office chair and the interior of the Acela high-speed commuter train — to reinvent electrical switches, lighting controls and receptacles. 888-4-ACENTI / [www.leviton.com](http://www.leviton.com) Circle No. \_\_\_\_ /Booth W3743

## HANOVER LANTERN

Hanover Lantern's new Bridgewater Series captures the nostalgic look of an old New England fishing village. Constructed of heavy-duty cast aluminum with a heavy-seeded glass onion globe, the Bridgewater Series is available in more than 20 different finishes. 717/632-6464/[www.hanoverlantern.com](http://www.hanoverlantern.com) Circle No. \_\_\_\_ /Booth S11296

## HOME AUTOMATION

Lumina from Home Automation is a sophisticated central lighting and control system that offers the options consumers desire, while maintaining an affordable price point.

Lumina allows for the setting of elegant lighting scenes throughout the home, with the ability to preset modes for each room that can be either scheduled or controlled manually with the push of a button.

All room controllers come with four preset scenes that can be changed to the homeowner's specifications quickly and easily. Lumina's whole house lighting control has six modes:away, vacation, party, home, sleep and special. 504-736-9810 / [www.homeauto.com](http://www.homeauto.com) Circle No. \_\_\_\_ /Booth W3792

## THOMAS LIGHTING

The Tudor Row family of lanterns offers five exterior lighting options. This lantern can be affixed to the outside of the home, installed from a hanging wire or attached to the top of a light pole. The cast aluminum outdoor bracket has a burnished umber finish with gold highlights. The glass enclosure is constructed from seeded glass panels. The lantern measures 9 x 21 inches. 502-420-9625 / [www.thomaslighting.com](http://www.thomaslighting.com) Circle No. \_\_\_\_ / Booth W3645





# Hansgrohe Builder Program

Quality

Service

Expertise



Showerpanel I  
Interaktiv S Handle Style



HighArch 2 Spray Pull-Out  
Metro Handle Style



Widespread Lav Set  
Solaris Handle Style



Trim, ThermoPlus Shower Set  
Stratos Handle Style



Lav Mixer 4" Center Set  
Monsoon Handle Style



Trim, ThermoBalance III  
1901 Handle Style  
Oil Rubbed Bronze Finish

# interaktiv

hansgrohe



Hansgrohe created Interaktiv, a premium series with six handle styles, to allow everyone to express their individuality with distinction. From elegant showerpanels to high-quality kitchen and bath faucets, Interaktiv gives you a variety of ways to enjoy superb style and performance. Call 800-334-0455 today to learn more about Interaktiv and Hansgrohe's Builder Program, or visit [www.hansgrohe-usa.com](http://www.hansgrohe-usa.com).

Builder Program

For Free information circle 18



# Windows & Doors



AVONNI



VETTER



WINDSOR

WOODGRAIN MILLWORK

## WINDSOR WINDOWS & DOORS

Windsor Windows & Doors announces its new line of Pinnacle Patio Doors, offering attractive features and benefits such as:

- taller, one-piece, thermally broken, pultruded sill for improved thermal performance and design pressure ratings
- integral aluminum nailing fin incorporated in frame for increased strength and rigidity
- heavy-duty interlock for substantially reduced air infiltration
- three-point locking system for added security
- wooden construction, hidden screws and elimination of adjustment holes and plugs for added beauty

515-223-6660 / [www.windsorwindows.com](http://www.windsorwindows.com)  
Circle No. 348. / Booth W1470

## AVONNI

Avonni offers a full line of premium windows, patio doors and entry door systems. The Avonni windows and door system provides the unique ability in the industry to match colors and styles for every opening of the home so that builders can use one company to fulfill all window and door specifications. The high-end aluminum clad windows include premium Ponderosa wood and a full color palette from which to choose. Avonni windows and doors may be quoted and ordered through the company's online order entry system.

866-229-7617 / [www.avonniwindows.com](http://www.avonniwindows.com)  
Circle No. 349. / Booth W343

## VETTER WINDOWS & DOORS

Vetter's newest offering for the patio is an aluminum-clad, full-radius-top French door. The new patio door has a 1 $\frac{3}{4}$ -inch or 2 $\frac{1}{4}$ -inch panel, constructed from kiln-dried select Western wood. This ensures the door is sturdy and does not warp. laminated veneered lumber in the core of the stiles further enhances the door's structural integrity.

800-VETTER-2 / [www.vetterwindows.com](http://www.vetterwindows.com)  
Circle No. 350. / Booth #2759

## WOODGRAIN MILLWORK

Woodgrain's Breckenridge Collection is constructed with premium grade knotty alder lumber. These striking doors are suitable for both formal and informal interiors. Each has the following characteristics:

- rich display of natural knots
- state-of-the-art, 1 $\frac{1}{8}$ -inch-thick split resistant panels
- 5 $\frac{3}{8}$ -inch-wide stile design
- engineered laminated veneered lumber core
- unique radius raise that increases depth appearance
- designed for interior or exterior use
- two-year warranty

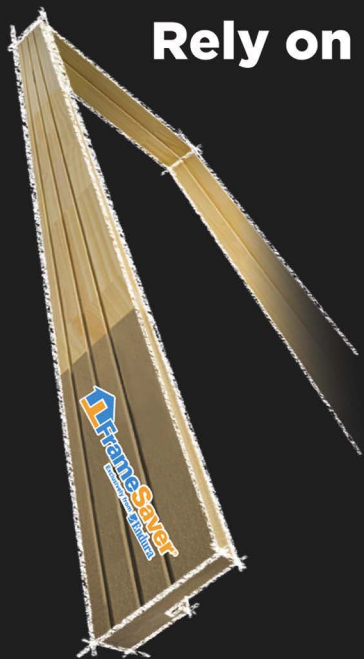
800-452-3801 / [www.woodgrain.com](http://www.woodgrain.com)  
Circle No. 351. / Booth W1474



# It's not a door without **FrameSaver**®.



## Rely on FrameSaver for "Rot Proof Solutions for Your Home"™ Now exclusively from Endura Products



No matter how well a home is built, over time water and insects will come in contact with your exterior door frames. Wood acts like a straw drawing up the moisture and eventually rots your frame. This makes repairing the damage costly.

The problem starts at the base, the portion of your door frame with the most exposure to moisture and insects. By protecting the base, you protect the entry to your home. It's where you'll make your first impression! That's the idea behind our patented FrameSaver® technology. A revolutionary wood composite material so resistant to rot and insect damage, we guarantee the frame for life. Contact Endura Products, Inc. for FrameSaver® and more rot proof solutions for your home; featuring all composite Z-Series Sills, French Door Astragals, Continuous Entry Door Systems, and weather sealing products.

*Visit us at the International Builder's Show in Orlando, Florida,  
January 11-13, 2006. Booth numbers W6061 and S10751.*

For Free information circle 19

 **FrameSaver**®  
Exclusively from  Endura

[www.enduraproducts.com](http://www.enduraproducts.com) | 800.334.2006 | [www.framesaver.com](http://www.framesaver.com)



# Windows & Doors



**RAYNOR**



**BILCO**



**KOLBE**



**HY-LITE**



**VELUX**

## RAYNOR

Raynor introduces RiverPointe wood carriage house doors. The collection offers the architectural detail of Raynor's high-end American Rivers Collection custom wood doors, but at a more affordable price point.

The four RiverPointe models appear to swing, fold or slide open. You can specify the one-piece swing-up, the swing-out, the side-accordion or the bi-fold, RiverPointe doors.

815-288-1431 / [www.raynor.com](http://www.raynor.com)  
Circle No. 352. / Booth W691

## THE BILCO COMPANY

The ScapeVIEW Series 6000 Basement Window completes the Bilco ScapeWEL Window Well System. An International Residential Code-compliant (IRC3000), basement-egress solution, the ScapeWEL Window Well System consists of the ScapeVIEW Series 6000 Basement Window and a high-density polyethylene ScapeWEL Window Well. There is a two-

piece assembly system consisting of a pour-in-place buck and a snap-in window unit. The buck is reinforced for strength and support to accommodate foundation pouring and includes weather-stripping to withstand air, dust and moisture infiltration. The window features a fully welded corrosion-resistant vinyl frame that can be easily cleaned with soap and water. It also utilizes Intercept Warm-Edge technology to reduce condensation around the window's perimeter, creating a thermal barrier-reduced, conducted heat loss. The heavy-duty locking mechanism and hardware has received the highest rating for forced-entry resistance. 203-934-6363 / [www.bilco.com](http://www.bilco.com).

## KOLBE WINDOWS & DOORS

Kolbe K-Force impact products are specially designed to meet or exceed the strict building codes of coastal regions. These windows and doors protect against forced entry while also providing reduced

sound transmission levels. Available in various sizes and color options, K-Force products are offered in double-hungs, casements, awnings, picture units, transoms, doors and sidelites. Features include: traditional wood window without brackets; energy efficient LoE2 coated glass and a warm-edge, stainless steel spacer enhanced with argon gas. 800-955-8177 / [www.kolbe-kolbe.com](http://www.kolbe-kolbe.com)  
Circle No. 354. / Booth W301

## HY-LITE PRODUCTS

New energy-efficient Solar Block Plus acrylic blocks from Hy-Lite Products come in vinyl or aluminum frames. The smoke-colored hue that helps block solar heat gain is created from mixing a non-metallic tint with raw acrylic.

Made of durable, lightweight acrylic, Solar Block Plus products are ideal for geographic areas where low-E products are required, or for any application where traditional low-E windows would be used. Available in clear wave in both 6- and

8-inch block sizes, the Solar Block Plus product can be used in either operable or nonoperable windows, as well as in door inserts.

419-924-9016 / [www.hy-lite.com](http://www.hy-lite.com)  
Circle No. 355. / Booth W1482

## VELUX AMERICA

Velux has introduced two new venting curb-mounted skylights. Venting skylights are useful in bathrooms and kitchens to provide more natural light and fresh air, as well as more privacy.

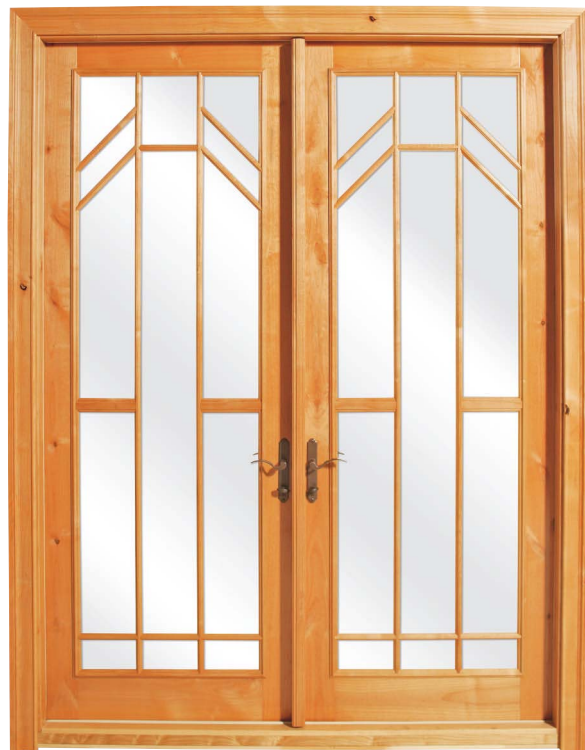
Pre-finished white frames, for the electric (VCE) and manual (VCM) models offer weather-tight installation, with factory-applied gaskets to seal out the elements. Low-E2 insulated glass can cut heat gain and loss, fading and condensation by 50 percent. The VCE model operates by remote control and comes with electronics and rain sensors pre-installed. 800-283-2831 / [www.VELUXusa.com](http://www.VELUXusa.com)  
Circle No. 356. / Booth W1459



# Windows & Doors



**JELD-WEN**



**PEACHTREE**

## **PITTSBURGH CORNING**

Pittsburgh Corning introduces its new LightWise aluminum clad wood window. The aluminum clad wood window frame comes pre-assembled with Pittsburgh Corning glass block. Builders can quickly and easily place the window into an opening, just like a traditional window pane. Built-in nailing fins anchor the window. Silicone is used to bond the glass blocks together. 800-624-2120 / [www.pittsburghcorning.com](http://www.pittsburghcorning.com)  
**Circle No. 357. / Booth W5085**

## **PEACHTREE DOORS & WINDOWS**

StaySafe impact-resistant window products meet the wind-borne debris codes for tropical storms. StaySafe products have at their core a strong layer of polyvinyl butyral bonded between two panes of glass. This laminated interlayer is designed to withstand extreme forces, even if the outer layers of glass break. The laminated glass also blocks more

furniture-fading UV rays and provides a sound barrier. For Miami-Dade County, the StaySafe line is available in a single-glazed impact product. In areas that require both energy-rated products and protection from wind-borne debris, StaySafe insulated impact-resistant products offer both. 800-732-2499 / [www.peachtreedoor.com](http://www.peachtreedoor.com)  
**Circle No. 358. / Booth 3143**

## **JELD-WEN**

Jeld-Wen Builders Clad-Wood Windows are crafted using solid pine AuraLast wood. Backed by a 20-year warranty against wood decay and termite infestation, each window comes standard with argon-filled, low-E glass. The glass is treated with special coatings that block 94 percent of harmful UV rays, resulting in a 96 percent improvement in thermal performance during the winter.

This window line is available in double-hung, casement, awning, picture and radius windows. The windows are built



**PITTSBURGH CORNING**



**BUILDMARK**



**ATRIUM WINDOWS & DOORS**

using an integral nailing fin. Options include simulated divided lites, white pre-finished interiors and factory-applied jamb extensions. The low-maintenance, aluminum cladding is available in White and Desert Sand and can be color-matched to other Jeld-Wen clad-wood and Jeld-Wen vinyl windows and patio doors. 800-877-9482 / [www.jeld-wen.com](http://www.jeld-wen.com)  
**Circle No. 359. / Booth W1701**

## **ATRIUM WINDOWS & DOORS**

Engineered to withstand the destructive impact of hurricane-force winds, SafeHarbor Windows offer the ideal combination of beauty and high performance to homeowners living on or near coastal settings.

SafeHarbor Windows feature a strong, laminated-glass construction that creates a barrier to obstruct the penetration of flying objects, severe weather and even unwanted intrusion. SafeHarbor windows also block outdoor noise and the majority of UV rays that fade interior furnishings.

They are available in a full range of sizes with energy-efficient insulated glass. 214-630-5757 / [www.atrium.com](http://www.atrium.com)  
**Circle No. 360. / Booth W5045**

## **BUILDMARK GARAGE DOOR PRODUCTS**

BuildMark S and SI residential doors offer a pan or insulated door. Single-car and two-car doors with lower pressure requirements incorporate high-strength, steel U-bar reinforcement for a Hurricane-Ready design. Two-car doors requiring higher pressures use a Removable Hurricane Post system to protect a home against hurricane-force winds.

BuildMark S and SI sections are constructed from high-strength, rust-resistant, galvanized steel and coated with a baked-on polyester paint finish for extended life. These sections also include a layer of polystyrene insulation for additional thermal-efficiency. 877-405-DOOR / [www.buildmarkdoors.com](http://www.buildmarkdoors.com)  
**Circle No. 361. / Booth 691**





## For energy and moisture solutions, insist on Dow around the house.

Energy costs are rising sharply, with no relief in sight. Home buyers are demanding more energy efficiency from their new homes. Now Dow can help you deliver more than ever before. Attend the free informative technical sessions at Dow Solutions Theater (W2543) at the International Builders' Show in Orlando January 11-14 to learn why today's better builders choose Dow.

Dow offers the industry's broadest portfolio of thermal insulation and moisture management products, including STYROFOAM™ extruded polystyrene and polyisocyanurate insulations, insulated concrete systems, housewraps, flashings, tapes, adhesives and sealants. And we back up our products with in-depth technical support and reliable, responsive sales support.

Offer your customers more value by delivering energy efficiency, moisture resistance and protection from air infiltration. Complete your homes with building envelope solutions from Dow.

**Seating is limited. Register at [www.insulateyourhome.com/ibs](http://www.insulateyourhome.com/ibs) for the free interactive product demonstrations and informative technical sessions.**

**Build on Our Knowledge**

**1-866-583-BLUE (2583)  
[www.insulateyourhome.com](http://www.insulateyourhome.com)**

### Technical Sessions Schedule

Wednesday, Jan. 11	Thursday, Jan. 12	Friday, Jan. 13	Saturday, Jan. 14
<b>9:30-10:30</b> Extreme Building for All Climates, Joseph Lstiburek, Building Science Corporation	<b>9:30-10:30</b> Extreme Building for All Climates, Joseph Lstiburek, Building Science Corporation	<b>9:30-10:30</b> Extreme Building for All Climates, Joseph Lstiburek, Building Science Corporation	<b>9:00-9:45</b> Energy and Moisture Solutions from Dow, Dow
<b>10:30-11:15</b> Benefits of a Closed Crawl Space, Jeff Tooley, The Healthy Building Company	<b>10:30-11:15</b> Benefits of a Closed Crawl Space, Jeff Tooley, The Healthy Building Company	<b>10:30-11:15</b> Benefits of a Closed Crawl Space, Jeff Tooley, The Healthy Building Company	<b>10:00-10:45</b> Insulating and Finishing a Better Basement, Dow
<b>11:15-Noon</b> Insulating and Finishing a Better Basement, Dow	<b>11:15-Noon</b> Insulating and Finishing a Better Basement, Dow	<b>11:15-Noon</b> Insulating and Finishing a Better Basement, Dow	<b>11:00-Noon</b> Protecting Basements and Foundations, Dow
<b>1:00-2:00</b> Protecting Basements and Foundations, Dow	<b>1:00-2:00</b> Protecting Basements and Foundations, Dow	<b>1:00-2:00</b> Protecting Basements and Foundations, Dow	
<b>2:00-3:00</b> Compatible Wall Bracing and Foam Sheathing Solutions, Jay H. Crandell, Consulting Engineer	<b>2:00-3:00</b> Compatible Wall Bracing and Foam Sheathing Solutions, Jay H. Crandell, Consulting Engineer	<b>2:00-3:00</b> Compatible Wall Bracing and Foam Sheathing Solutions, Jay H. Crandell, Consulting Engineer	
<b>3:00-3:30</b> Shear Wall Panels for Advanced Framing, Peter Baker, PE, Building Science Corporation, and Jim Wilcoski, PE, Department of Army, Corps of Engineers, Sponsored by Tamlyn	<b>3:00-3:30</b> Shear Wall Panels for Advanced Framing, Peter Baker, PE, Building Science Corporation, and Jim Wilcoski, PE, Department of Army, Corps of Engineers, Sponsored by Tamlyn	<b>3:00-3:45</b> Energy and Moisture Solutions from Dow, Dow	
<b>3:30-4:15</b> Energy and Moisture Solutions from Dow, Dow	<b>3:30-4:15</b> Energy and Moisture Solutions from Dow, Dow	<b>4:00-4:45</b> The Superior Advantages of Precast Concrete Walls, Jim Osborne, Superior Walls	
<b>4:15-5:00</b> The Superior Advantages of Precast Concrete Walls, Jim Osborne, Superior Walls	<b>4:15-5:00</b> The Superior Advantages of Precast Concrete Walls, Jim Osborne, Superior Walls		



**Building & Construction**

For Free information circle 20

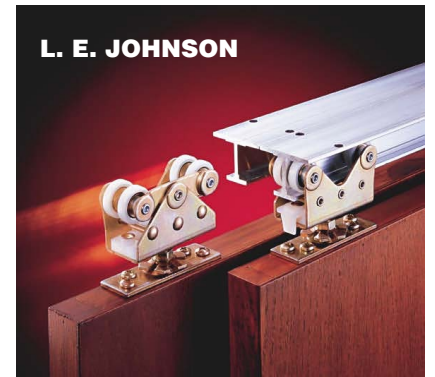


# Windows & Doors

## Frames & Hardware



**HOPPE N. A.**



### PLASTPRO

PF Frames from Plastpro are an innovative alternative to traditional wood doorframes. After extensive research and development, Plastpro has formulated a poly-fiber doorframe system that combines all the strength and convenience of wood with enhanced properties that make it moisture-, rot- and insect-resistant. The advanced PF Frames system can be machined in the same way as traditional wood frames, with no added hassles. Plastpro PF Frames guarantee a long-lasting, rot-free entryway that will maintain its integrity for a life-time.

800-779-0561 / [www.distinctiondoors.com](http://www.distinctiondoors.com)

Circle No. 361. / Booth W621



### HOPPE NORTH AMERICA

The recent introduction of HBL, a cylindrical lock system from Hoppe, provides European-style locksets for interior and exterior doors that fit standard North American door prep. HBL is intended to complement Hoppe's wide range of products, such as multipoint locks, handle sets with cylinders, adjustable door hinges and turn-and-tilt hardware for windows.

888-485-4885 / [www.us.hoppe.com](http://www.us.hoppe.com)

Circle No. 362. / Booth W0329

### ROYAL MOULDINGS

Pro Frame by Royal Mouldings is the first totally no-rot exterior door system, with an all-cellular vinyl PVC and stainable entry frame, for use with traditional as well as fiberglass entrance and patio doors. Approved by Miami-Dade County Code to resist extreme weather conditions, Proframe has a UL 20-minute rating. Proframe Kits include the doorframe with weather-strip-ping already installed. Lineal profiles with matching brick-moulding accessories are available in both finished and stainable profiles that complement wood grains — but without wood's natural flaws.

800-368-3117 / [www.royalmouldings.com](http://www.royalmouldings.com)

Circle No. 363. / Booth W201

### L.E. JOHNSON PRODUCTS

The new 200 Series Pocket Door Frame from L.E. Johnson Products is the first ultra-heavyweight pocket door hardware that includes its own easy-to-install frame. Specifically designed for supporting doors that are too large or heavy for standard hardware, the 200 Series can support doors weighting as much as 300 pounds. It is available in sizes up to 1 3/4 inches thick by 5 feet wide and 9 feet tall.

574-293-5664 / [www.johnsonhardware.com](http://www.johnsonhardware.com)

Circle No. 364. / Booth W5295

# Easy-Arch

The Name Says It All.

Quarter Circle

Half Circle

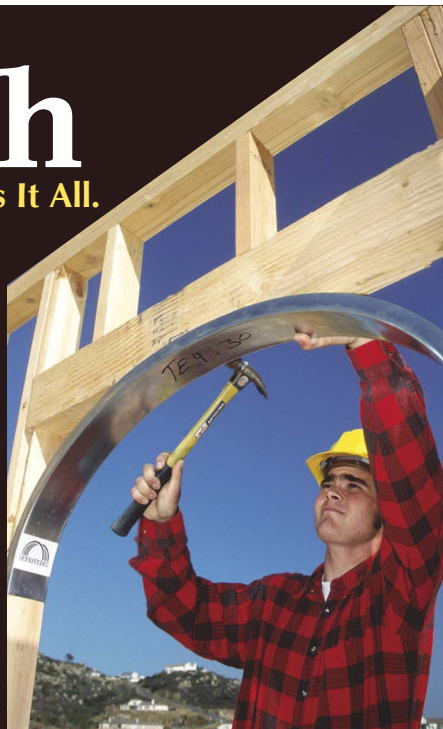
True Elliptical

Compound Radius

Eyebrow

Available in over 140 standard sizes through our nationwide distribution network.

- Pre-formed & Precut !
- Ready to Install !
- Perfect Shapes !
- Cost Effective !
- Quick & Easy !



### Now Featuring: Adjustable Arches!

Adjusts to fit nearly any opening from 2.5-inches to 12.5-inches in depth.

Call or visit our website for the dealer nearest you.

800-854-2461



[www.easy-arch.com](http://www.easy-arch.com)







# Give Customers Powerful Peace of Mind

## Keep Them Smiling With Backup Power

**Outside, it's cold, windy and icy. Power has been down for hours.**

But this family is warm, safe and secure. A builder-installed backup power system keeps their power on.

They surf the 'net, watch TV, eat a hot dinner and enjoy cold drinks.

Their home's alarm system, cordless phones, garage opener and sump and well pumps all work.

In the back of the mother's mind, she's glad her builder offered the backup power system by Emerson.

Help your customers feel safe, secure and comfortable. Offer backup power to protect

them from increasingly frequent...and longer... power outages.

The ASCO Power Technologies Backup Power System is part of the Emerson family of such trusted products as Insinkerator®, White-Rodgers, Ridgid®, Closet-Maid® and Knaack®.

Learn how easily you can offer backup power to homebuyers. Call 800-800-ASCO (2726), email [brian.phelan@asco.com](mailto:brian.phelan@asco.com), or circle the number to request free information.



**ASCO Series 165 Backup  
Power Transfer Switch**

The Emerson Logo is a trademark and service mark of Emerson Electric Co. © 2005 CS82 ASCO Power Technologies. All rights reserved throughout the world. Specifications subject to change without notice.

**ASCO** Power  
Technologies®

  
**EMERSON**™

For Free information circle 22

**EMERSON. CONSIDER IT SOLVED.™**



# SafeGuard™ Your Home Against the Elements...

**...and Remain Calm BEFORE and AFTER the Storm**

**SafeGuard™**  
**Impact Resistant  
Windows**



When everything is chaotic outside, you can stay calm knowing the homes you've built are protected with **SafeGuard™** windows from Silver Line®. Our line of Impact Resistant windows meet both the ASTM and Miami-Dade test standards for impact resistance. Our extensive manufacturing, distribution and transportation network ensures you'll get your windows on-time, keeping you calm before the storm, while proven, dependable protection for your coastal homes will help keep you calm after the storm. For more information call 800.234.4228 or visit [www.silverlinewindows.com](http://www.silverlinewindows.com).

**SafeGuard™ - Protecting Homes  
From Nature's Fury.**

For Free information circle 23

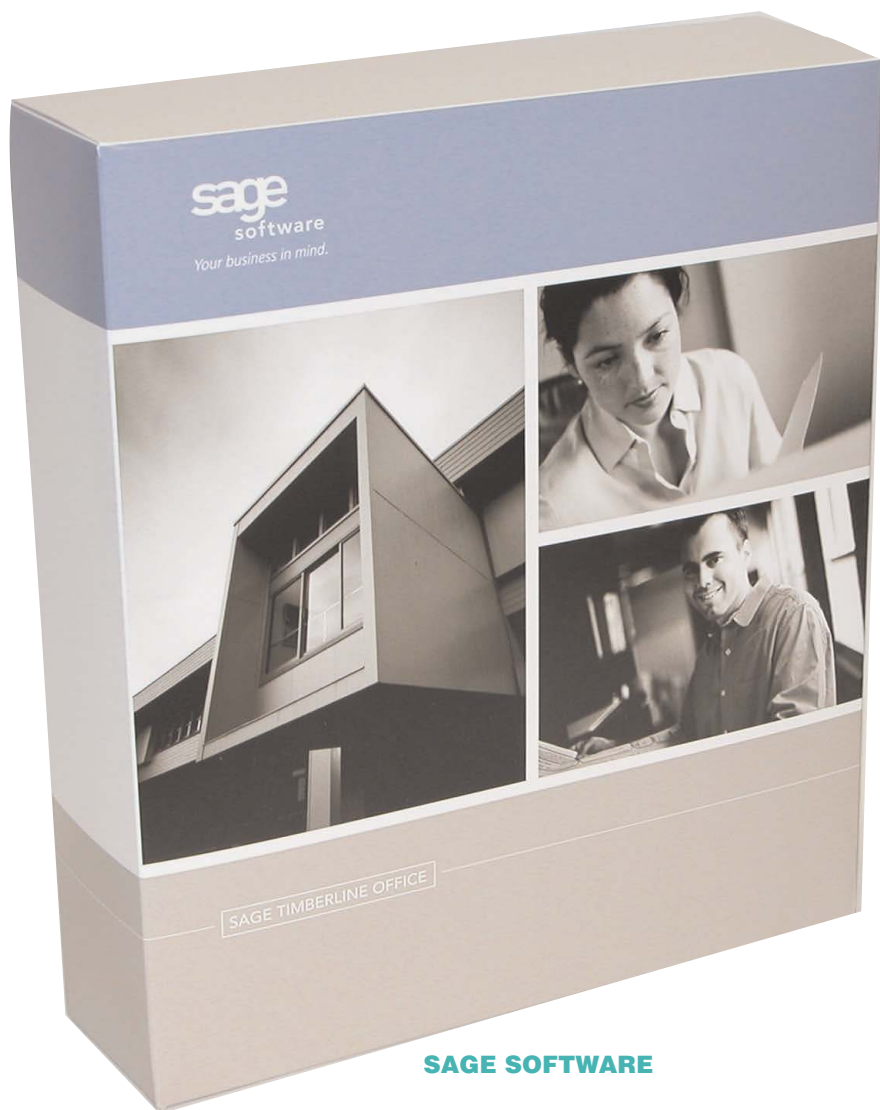
**Come See us at The International Builders' Show  
January 11-14, 2006 Booth # 1471**

**Silver Line Windows**  
AT WORK IN MILLIONS OF HOMES  
800-234-4228 | [www.silverlinewindows.com](http://www.silverlinewindows.com)





# Services & Software



**SAGE SOFTWARE**

## SAGE SOFTWARE

Home builders are increasingly turning to an electronic means to handle the thousands of documents that flow through their businesses. In construction alone, some firms handle 30,000-plus documents monthly to track projects, purchases, materials, invoices, and labor costs. Sage Software (formerly Best Software) offers Document Management, a new Timberline Office application that provides fully integrated document control, including classification, storage, search and retrieval.

Created specifically for small and medium-sized businesses, Document Management offers ease of installation and use, as well as a low total cost of ownership in line with other Timberline Office applications.

800-628-6583 / [www.timberline.com](http://www.timberline.com)

Circle No. 365. / Booth W3943

## SOFTPLAN SYSTEMS

SoftPlan Version 13 brings across-the-board improvements that will assist in creating high-quality designs with maximum efficiency. New features include auto cabinet, the ability to use layers, template and single-key keyboard shortcuts. In addition, enhancements have been made to SoftView, SoftList and SoftPlan reView. Contact SoftPlan for a free demo.

800-248-0164 / [www.softplan.com](http://www.softplan.com)

Circle No. 366. / Booth W4171

## COUNTRYWIDE HOME LOANS

With Countrywide Home Loans, qualified buyers can finance the purchase of the land on which to build homes. Then they can work with their builders to plan construction and apply for a one-time-close loan when the construction phase is ready to start. Features include:

- two-year loan term with a one-time optional 6- or 12-month extension
- Adjustable Rate Mortgage with interest-only monthly payments (balloon payment of principal due at the end of loan term)
- loan amounts up to \$500,000
- available for an owner-occupied primary residence or second home

800-262-4214 / [www.countrywide.com](http://www.countrywide.com)

Circle No. 367. / Booth W3671

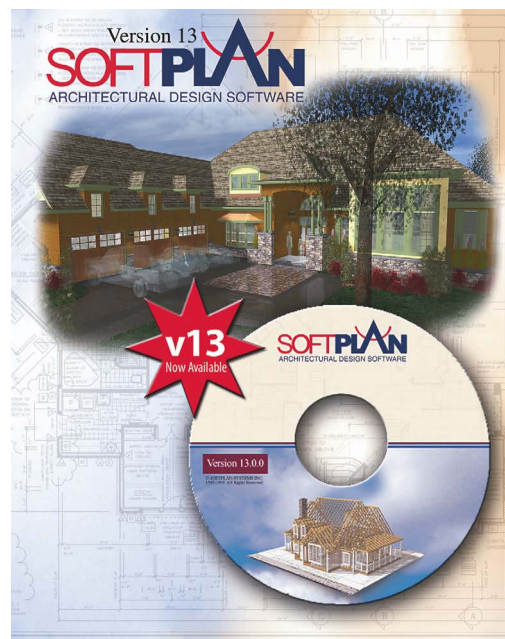


# Countrywide®

## HOME LOANS

### National Builder Division

**COUNTRYWIDE  
HOME LOANS**



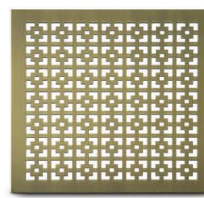
**SOFTPLAN**



## The flexibility you need.

FOR YOUR COMPLIMENTARY CATALOG CALL US AT 1.800.387.6267\*

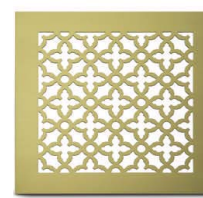
CUSTOM DESIGNED, FABRICATED AND FINISHED PERFORATED AND BAR GRILLES



\*200 Square Link



\*210 School Slot



\*225 Majestic

Perforated & Bar Grilles • Curved Grilles • Waterjet & Laser cutting • Stock Items Available  
ARCHITECTURAL GRILLE 42 Second Avenue, Brooklyn, New York 11215 Phone 718.832.1200 Fax 718.832.1390 [www.archgrille.com](http://www.archgrille.com)

\* Phone number valid outside of New York State.

For free information circle 24





*Thinking of You*

# Investment Security Peace of Mind

Superior Concrete Products is a respected design-build company that manufactures and installs decorative precast concrete fences, screening walls, and sound barriers. Superior has over 20 years experience, with satisfied customers throughout United States. Contact us today, so we can be thinking of you.



## **SUPERIOR CONCRETE PRODUCTS**

Proven Leaders of Precast Concrete Fences and Screening Walls

800-942-9255 or 817-277-9255    [www.concretefence.com](http://www.concretefence.com)

For Free information circle 25



# Paint, Caulks & Sealants



**POLYSEAMSEAL**



**ACE SENSATIONS**



## OSI PRO-SERIES



**MAXXON AND MER-KRETE**

## ICI PAINTS

### ICI PAINTS

Custom Home Exterior from ICI Paints is a professional flat paint that is ideal for new homes. Durable, easy to apply and with a low odor, the latex paint resists blistering, flaking, fading and chalking. 800-984-5444 / [www.icipaintsstores.com](http://www.icipaintsstores.com) Circle No. 368. / Booth W3343, W3351

### POLYSEAMSEAL

New Polyseamseal Tub & Tile Ultra Sealant provides an easy-to-use caulk for sealing out water and moisture in high-humidity areas, such as kitchens and baths. With its high gloss finish, Tub & Tile Ultra contains a patented BioGuard antimicrobial agent for long-lasting protection against unsightly mold and mildew growth on cured caulk.

Tub & Tile Ultra Sealant is formulated to remain flexible and is guaranteed crack-proof. Because it is water-based, it cleans up easily with soap and water. But unlike silicones, it is low odor. Providing a water-resistant seal for tubs, sinks,

shower stalls and surrounds, ceramic tiles, countertops and more, Tub & Tile Ultra Sealant adheres to metal, porcelain, wood, drywall, painted surfaces, many plastics, plaster and vinyl.

440-255-8900 / [www.polyseamseal.com](http://www.polyseamseal.com) Circle No. 369. / Booth W429

### OSI PRO-SERIES

OSI Pro-Series QUAD Advanced Formula Sealant now features a multi-polymer, low-VOC formula that meets all the stringent new state and federal VOC regulations.

The new sealant provides excellent stretch and movement capability, plus superior, all-weather adhesion and easy extrusion — even through water and in temperatures below 20 degrees. When cured, QUAD is mildew-resistant and will not crack or yellow. It is available in a variety of colors to match gutters, vinyl windows and siding.

888-445-0208 / [www.osiproseries.com](http://www.osiproseries.com) Circle No. 370. / Booth W429

### MAXXON AND MER-KRETE

Maxxon and Mer-Krete have teamed up to offer a 15-year warranty for crack isolation when using Maxxon's underlayments and Mer-Krete's Fracture-Guard 5000 Anti-Fracture Membrane. When Fracture Guard 5000 is applied over Maxxon underlayments and in accordance with Maxxon's and Mer-Krete's installation instructions, a 15-year warranty for ceramic, quarry and marble tile is available. This method also meets the new TCNA Standards for installing a Crack Isolation Membrane over poured gypsum when tile or stone overlays are used.

800-356-7887 / [www.MaxxonCorporation.com](http://www.MaxxonCorporation.com) Circle No. 371. / Booth W2383

### ACE HARDWARE CORPORATION

Ace Sensations with Scotchgard Protector is a premium acrylic latex flat paint.

Using advanced stain resistance technology, Ace Sensations with Scotchgard Protector repels common household blemishes such as coffee, crayon, grape juice and oily spots made by lipstick and grease.

Household dirt and grime wash off easily with soap and water or an all-purpose cleaner on walls painted with Ace Sensations. This paint also contains a mildewcide so it's safe to use in high-moisture areas, such as kitchens and bathrooms.

630-990-9359 / [www.acehardware.com](http://www.acehardware.com) Circle No. 372. / Booth W0391



## Product Showcase

### STOCK & CUSTOM WOOD CARVINGS BY OUTWATER



FREE MASTER CATALOG!

LOWEST PRICES...WIDEST SELECTION... ALL FROM STOCK!

**ARCHITECTURAL PRODUCTS BY OUTWATER**

Call **1-888-772-1400** (Catalog Requests)

**1-800-835-4400** (Sales) • Fax **1-800-835-4403**

**www.outwater.com**

New Jersey • Arizona • Canada



For FREE information circle 201

Visit Us at IBS Booth #W6453

Soap Dishes

Shampoo Shelves

Toiletry Shelves

Shaving Steps

**DÜK LINER™**

*The Custom Niche In 20 Minutes*

**888.821.2545**

**Dukliner.com**

Effortless Installation • Increased Profitability • No Leak Callbacks

For FREE information circle 203

*NOW AVAILABLE IN  
SELECT AND KNOTTY ALDER*

ENGINEERED  
STILE & RAIL

RAISED PANEL

FLAT PANEL

FRENCH GLASS

MDF PAINT GRADE

**woodport®**  
INTERIOR DOORS  
Handcrafted by Heritage Veneered Products



DISTRIBUTOR OPPORTUNITIES AVAILABLE • **WWW.WOODPORT.COM**

For FREE information circle 202

How do you improve  
upon the industry's  
most trusted moisture  
control products?



You stand behind  
them with the  
industry's  
best warranty.

For more information on this 10-year limited warranty,  
please see Fortifiber.com or visit us at the International  
Builders Show in Booth W791.



**Fortifiber Building Systems Group™**  
Protecting Your World from the Elements™

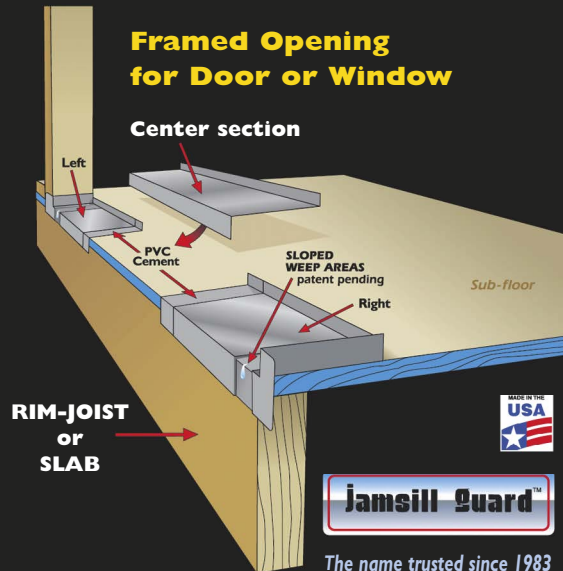
For FREE information circle 204

Visit Us at IBS Booth #W791



## THE ORIGINAL jamsill guard™ SILL PAN FLASHING

Jamsill Guard™ is a molded sill-pan flashing, designed to weather-proof the rough openings of doors and windows.



The name trusted since 1983

**800-JAM-SILL**  
**www.jamsill.com**

For FREE information circle 205

## UDA ConstructionOffice™ Construction Productivity Software

### Get Started Today.

Built on the proven technology of QuickBooks and Microsoft Office, UDA ConstructionOffice™ delivers a powerful, integrated project management system used by tens of thousands of small to medium businesses worldwide.



Professional  
starting at **\$499**

Network Versions  
5 user package  
starting at **\$1499**

- Estimating
- Scheduling
- Contracts & Specs
- QuickBooks Integration
- Mobile Integration
- Document Management



Download a FREE TRIAL at [www.udatechnologies.com](http://www.udatechnologies.com) or call 1.800.700.8321

For FREE information circle 206

## introducing FLEX-C ARCH

New Flex-C Arch allows you to frame arches in a fraction of the time required by traditional methods. Based on the patented technology of the proven Flex-C Trac® system, Flex-C Arch is extremely sturdy and accommodates doorway and window arch applications with accuracy.

Build your next arch with Flex-C Arch and you'll be a believer!

FLEX-ABILITY-CONCEPTS

- Standard widths: 2"x4", 2"x6", 3.625" • 33 mil (20 gauge)
- 6", 2.5", 4", 2"x8", 2"x10" and 2"x12" • Comes ready to form
- Standard lengths: 5' and 8' • Shape by hand

Visit [www.flexc.com](http://www.flexc.com) or call 405.996.5343

For FREE information circle 207

Visit Us at IBS Booth #S11121

## PURE WATER FOR DRINKING, COOKING & ICE-CUBES



SEAGULL® IV X-2KF water purifier features the innovative "Structured Matrix™" purification technology. This award-winning purifier removes bacteria, cysts and viruses\*, along with foul taste, odor and pesticides such as chlorine, producing great-tasting, purified water for drinking, cooking and ice-cubes. No chemicals, hold-time or electricity needed. The installation is easy and they're virtually maintenance free.

\*Independently certified to meet the EPA Purification Standard

**SEAGULL® IV**  
drinking water purifier

800-441-8166 E.T.  
[www.generalecology.com](http://www.generalecology.com)



©2005 - ®, ™ are registered trademarks of General Ecology, Inc. All health claims not in accordance with local or state laws are hereby withdrawn.

For FREE information circle 208



## Product Showcase



**Wholesale Door Source**

**SAVE 15%-50%**

1000's of top quality entry, interior & patio doors. Shipped directly to your jobsite.

Order Your Door Online Today!

**WholesaleDoorSource.com**

**Double 3/0  
8'0" Pre-Hung  
Unfinished Mahogany**

**\$2,299**

DELIVERED  
In Contiguous U.S.

**Double 3/0  
6'8"**

**\$1,999**

Available In Several Glass  
& Door Styles

Quantities are limited to  
stock on hand.



**Wholesale Door Source (888) 651-1950**

**WholesaleDoorSource.com**

For FREE information circle 209

**In-Wall Security Cabinets**

**THE ULTIMATE IN PROTECTION & SAFETY**



Available with  
key or digital  
security lock.



**IT'S THE LITTLE EXTRAS  
THAT MAKE THE SALE!**

- Profit opportunity using value add option
- Offer products others do not offer
- Simplistic home security for your customers
- Provide peace of mind
- Home design benefit which can be built into the mortgage

**Contact us for special builder pricing.**

Tiffin Metal Products Co.  
450 Wall Street  
Tiffin, OH 44883  
800-537-0983  
[www.tiffinmetal.com](http://www.tiffinmetal.com)



For FREE information circle 211

Visit Us at IBS Booth #W7042

COLUMNS, BALUSTRADES & MOULDINGS

**MELTON**  
Makes It  
**CLASSIC**

- Fiberglass Columns
- Poly/Marble Columns & Balustrades
- Synthetic Stone Balustrades & Columns
- Wood Columns
- Cast Stone Balustrades & Details
- Polyurethane Balustrades, Mouldings & Details
- GFRC Columns & Cornices
- GRG Columns & Details



Call Now For Your Custom Quotation  
**800-963-3060**

For comprehensive product information visit:  
[www.MeltonClassics.com](http://www.MeltonClassics.com)



**Melton Classics**  
Incorporated

For FREE information circle 210

**Celebrating 40 Years!**



Since 1964, Finlandia Sauna has been nationally recognized as a manufacturer of Saunas without equal. We design and build custom, precut, and prefabricated rooms of any size and shape. Our pre-planning assistance and customer service is unmatched in the Sauna business.

Call 800-354-3342 for a free brochure or browse our web site [www.finlandiasauna.com](http://www.finlandiasauna.com) for complete information. Finlandia Sauna for your health!

**Finlandia Sauna**

For FREE information circle 212

Visit Us at IBS Booth #W2293



**MADE IN  
USA★**

Visit Us at IBS Booth #S10779

Visit Us at IBS Booth #W4449

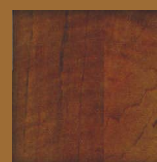


## Product Showcase



The perfect tool  
for making profits in  
the closet business.

The construction industry can be full of headaches and holdups. This isn't one of them. Custom closets are easy to design, simple to install and extremely profitable. We make it easy to join the thousands of construction professionals who are offering closets to their customers. Put a closet like this into your next job and make some real money in closets.



**ProClosets**  
The Professional's Choice for Closets

877-BUY-A-PRO

For FREE information circle 216



**WORTHINGTON**  
*Your Only Source For Fine Architectural Details*

- Fiberglass Columns & Balustrades
- Polyurethane Balustrades
- Stone Columns & Balustrades
- Fireplace Mantels
- Architectural Wood Columns
- Crown Mouldings

**Call Today For Free Catalog!**

6950 Phillips Hwy • Suite 20 • Jacksonville, FL 32216 • Toll Free: 1-800-872-1608  
**WorthingtonMillwork.com**

For FREE information circle 217

## Sleep like a baby. . .Enjoy peace and quiet



### You don't have to discount homes built near noisy locations!

Keep your current window supplier and still get STC values from 45 to over 55. Add a specially engineered high tech Soundproof Window to your existing windows of choice and create sound studio quiet.

- More economical and more effective than specialty noise abatement windows that cost three times as much
- Add our windows where additional quiet is needed, even after final construction
- Our small footprint make them "invisible" windows

**Don't discount noisy homes, sell them for a premium with Soundproof Windows.**

Visit our website for more details, specifications and pictures.

Available Nationwide



**www.soundproofwindows.com**

**877.438.7843**

For FREE information circle 218



## STONE MANTELS

by  
**FORSHAW**



### Look at these features

- Sized for 36" and 42" fireplaces
- Easy installation
- A unique alternative to marble and mantel surrounds at a competitive price
- No minimum order
- Fantastic display program
- Wide variety of styles available

**FORSHAW**

13200 Corporate Exchange Dr.  
St. Louis, Missouri 63044-3719  
(314) 874-4300 • Fax (314) 874-4339  
Toll Free 1-800-FORSHAW (367-7429)  
www.forshawmantels.com

For FREE information circle 219

Visit Us at IBS Booth #S11640



Damage to Floors  
Rearranging Chairs  
Moving Chairs to Clean

## GO Suspended Seating!



**SEATING INNOVATIONS**

445 West 1260 North  
Orem, Utah 84057  
888-864-3463  
888-221-1262 Fax  
www.seating-innovations.com

For FREE information circle 221

Visit Us at IBS Booth #W178

**NEW** from the manufacturers of BETTER-BENCH™

## RECESS-IT™



Products shown are produced of a corrosion resistant alloyed aluminum with an elastomeric-waterproofing and anti-fracture coating combined with an aggregate bonding base. Finished materials, ceramic tile, marble, granite, etc. can be applied immediately after product installation utilizing **standard** mastics or thin-set. No additional additives are required. Listed products are supplied with (4) multi-purpose wall fasteners which may be used with/without preinstalled wood blocking.

## BETTER-BENCH™



### The Shower Bench Solution

An easy to install bench-forming system that replaces the complex methods currently in use.

This fully independent supporting unit can be mounted to most vertical surfaces quickly and efficiently, saving the installer valuable time. What once took two days to complete can now be done in about an hour! BETTER-BENCH™ provides design flexibility and is ideal for new or retrofit applications. *Patented*



For more information  
or a distributor near you, call  
**1-800-382-9653**  
**INNOVIS CORPORATION**  
www.innoviscorp.com

For FREE information circle 220

Old and busted...



or



get the picture?

## CODE BOX™

The makers of PRO-VENT bring you yet another way to improve your job site.

- Address panel displays 4" numbers. Comes with starter pack of 50 numbers.
- Quick and easy installation. Mounts on a standard fence T-post.
- Simple Rotating Latch closure. Lockable with any padlock.
- Weatherproof Plan holder. Fits any standard plan size.
- Display building permit year round. Weather protective sleeve.
- Inspection receipt pocket. Eliminate the treasure hunt.
- Patent Pending.

**PRO-VENT**  
VENTILATION DEBRIS PREVENTION

P.O. Box 3056  
Olathe, Kansas 66063  
866-782-8862  
http://www.pro-vent.com

For FREE information circle 222

Visit Us at IBS Booth #S11238



# VACUUMS **WET** and **DRY**

Finally, a Built-In Central Vacuum System that will simultaneously clean, wet and dry!



Dry Vacuum



Quick Spill Pick Up



Hard Floor Cleaning



Carpet Cleaning



Upholstery/Auto Cleaning

The AQUA-AIR Wet/Dry® will vacuum every surface using a 100% dust removal, water-filtration process, but also incorporates a hot water delivery

and pick-up capability to deep clean those same surfaces. The Aqua-Air Wet/Dry is the most advanced central vacuum cleaning system.

Ideal for: • Homes • Restaurants  
• Health Care • Auto Detailers  
• Day Care • Vet Clinics and more....

**Residue-Free Cleaning for a Healthy Indoor Environment**

[www.aquaair-wetdry.com](http://www.aquaair-wetdry.com) or call 800-916-5777

**AQUA-AIR**  
**Wet/Dry**  
**Total Cleaning System**

Patented  
Made in USA

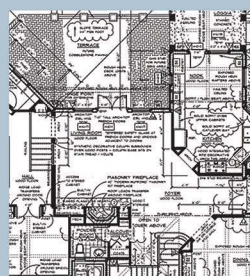
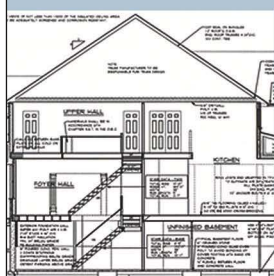
All recovered  
soil and water are  
automatically sent  
down the drain.

For FREE information circle 223

## Just Released SoftPlan Version 13 Now is the Perfect Time to Purchase or Upgrade!



3D Rendering By:  
Marcus Bell & Associates



### Everything You Need in a CAD Package to Simplify Design Workflow

For over twenty years, SoftPlan has been redefining the way builders, architects, remodelers, and designers complete residential and light commercial building projects. Using the latest technology, SoftPlan helps create high-quality, custom designs with maximum efficiency. Quickly turn sketches into precise working drawings, as this object oriented design program intelligently thinks for the user, eliminating much tedious and time-consuming work. Get your FREE demo today and learn about the one tool that will bring your business to a whole new level!

for a **FREE** demo CD or live demo  
call 800-248-0164 or visit [www.softplan.com](http://www.softplan.com)

International Builders Show  
Booth #W4171

Version 13  
**SOFTPLAN**  
ARCHITECTURAL DESIGN SOFTWARE

floorplans • elevations • cross sections • material lists • 3D renderings • DWG drawings

For FREE information circle 224

Visit Us at IBS Booth #W4171



## Solid design. Solid choice.



The new Legacy Series® Double-Hung Tilt window by Weather Shield® brings a new standard of beauty to your designs. Available in seven custom wood interior options, the window features durable, solid wood jamb liners that can be stained or painted to seamlessly match the sash. A patented, concealed hardware mechanism allows for easy, one-handed lock and tilt operation. The hardware is available in seven finishes. Learn more at [www.weathershield.com](http://www.weathershield.com) or call 1-800-477-6808.

**Weather Shield Windows & Doors**

For FREE information circle 225

Visit Us at IBS Booth #W1943

## Maintenance-Free Cupolas and Louvers



Maintenance-Free, stock & custom cupolas from New Concept Louvers are wrapped with PVC coated aluminum and copper. Made from the same materials as our custom louvers, they never require painting like wood products. They arrive in three easy to install pieces pre-cut to fit any roof pitch, and can be ordered in stock sizes or to custom specifications. Over 400 colors are available, as well as many different weather vanes and accessories.

**New Concept Louvers**

800-635-6448 • [www.NewConceptLouvers.com](http://www.NewConceptLouvers.com)

For FREE information circle 226

Visit Us at IBS Booth #W5289

create a **watertight** shower  
in less time with products from Noble Company

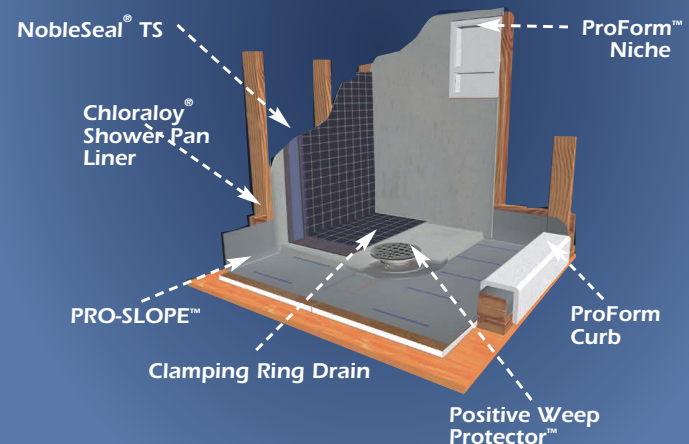
**ProForm Niches and Curbs**  
Waterproof, lightweight and "tile ready".

**PRO-SLOPE**  
Creates the slope required under the shower pan.

**Chloraloy**  
Shower pan liner made from CPE. Guaranteed to last.

**NobleSeal TS**  
Thin-set waterproofing for shower walls, drying areas, floors, etc.

**Clamping Ring Drain**  
Available with either a square or round strainer.



**Noble Company**

**800-878-5788**  
[www.noblecompany.com](http://www.noblecompany.com)

For FREE information circle 227



# Make Sure Your Home Empties After It Rains.

**COSELLA DÖRKEN**

Wrap your home in DELTA®-DRY and remove the threat of moisture damage entirely. DELTA®-DRY is an exceptional weather resistive barrier that dramatically lowers wall moisture content more than traditional weather resistive barriers. Which matters. Because when you keep moisture out, you keep the water damage away. DELTA®-DRY. You'll live to appreciate it.

See us at the IBS Show booth # W5661.

**DELTA®-DRY**  
**LIVE DRY**

1-888-4DELTA4 (433-5824)  
[www.cosella-dorken.com](http://www.cosella-dorken.com)

For FREE information circle 228

Visit Us at IBS Booth #W5661



# Ad Index

Company	Page #	Circle #	Phone	Web Site
Architectural Grille	43	24	718/832-1200	www.archgrille.com
ASCO	41	22		
BHK Of America	32	17	800/663-4126	www.bhkofamerica.com
Capital One Services Inc.	10	4	800/955-7070	www.capitalone.com
Dow Building Company	39	20	800/441-4369	www.dowbuildingmaterials.com
Dryvit System Inc	21	10	401/822-4100	www.dryvit.com
Dura Undercushions Ltd	16	9	800-295-4126	www.duracoustic.com
Easy Arch	40	21	800/854-2461	www.easy-arch.com
Endura Products Co.	36	19	800/334-2006	www.enduraproducts.com
Hansgrohe	34	18	800/334-0455	www.hansgrohe-usa.com
Jeld-Wen	26-27	14	800/535-3462	www.jeld-wen.com
Marvin Windows & Doors	15	8	800/435-0013	www.marvin.com
Masonite International Corporation	c4	30	800/663-DOOR(663-3667)	www.masonite.com
NRS Corp.	13	7	800/851-5823	www.nrscorp.com
Propane Education & Research Council		c3	29	202/261-2200
www.propanecouncil.org				
Protect-o-Wrap	23	11	800/759-9727	www.protectowrap.com
Protect-o-Wrap	25	13	800/759-9727	www.protectowrap.com
Silver Line Building Pdts	42	23		
Superior Concrete	44	25	800/942-9255	www.concretefence.com
Therma-Tru Doors	6-7	3	800/THERMA-TRU	www.thermatru.com
Tremco Barrier Solutions	28	15	800/DRY-BSMT	www.tuff-n-dri.com
Trus Joist, A Weyerhaeuser	4	2	800/338-0515	www.trusjoist.com
Business				
Universal Forest Products, Inc.	12	5	800/598-9663	www.ufpi.com
USG	31	16	1-800-USG-4YOU	www.usg.com
Vanguard Industries, Inc.	24	12	800/775-5039	www.vanguardpipe.com
Weather Shield Windows & Doors	c2-3	1	800/477-6808	www.weathershield.com

# Advertising Sales

## Associate Publisher

Tony Mancini, 610/205-1180  
Fax 610/205-1183  
amancini@reedbusiness.com  
Rebecca Breskman, Administrative Assistant  
610/205-1179  
rebecca.breskman@reedbusiness.com

## CT, ME, MA, NH, NJ, NY, OH, PA, RI, VT, Eastern Canada

Bill Black, 610/205-1172  
Fax 610/205-1183 wblack@reedbusiness.com

## AL, AR, DC, DE, FL, GA, KY, LA, MD, MS, NC, SC, TN, VA, WV

Michael Stein, 610/205-1181  
Fax 610/205-1183 mstein@reedbusiness.com

## IA, IL, IN, MI, MN, ND, SD, WI

Tim Gillerlain, 630/288-8168  
Fax 630/288-8145  
tim.gillerlain@reedbusiness.com  
Colleen McNamara, Administrative Assistant  
630/288-8181 cmcnamara@reedbusiness.com

## AZ, CA, CO, ID, KS, MO, MT, NE, NM, NV, OK, OR, TX, UT, WA, WY, HI, AK, Western Canada

Bret Ronk, 972/644-1153  
Fax 972/235-6554, bronk@reedbusiness.com  
Colleen McNamara, Administrative Assistant  
630/288-8181, cmcnamara@reedbusiness.com

## Inside Sales

Shelley Perez, 630/288-8022  
Fax 630/288-8145  
shelley.perez@reedbusiness.com

## Events/Custom Publishing Director

Judy Brociek, 630/288-8184  
Fax 630/288-8145 jbrociek@reedbusiness.com

## Custom reprints and electronic usage

800/290-5460 x136  
professionalbuilder@reprintbuyer.com

## Advertising Production Manager

Paul Brouch, 630/288-8074

## Advertising Contracts

Jerilyn Schmitz, 630/288-8072

## EDITORIAL & PUBLISHING OFFICE

Professional Builder  
2000 Clearwater Drive, Oak Brook, IL 60523  
Phone: 630/288-8000, Fax: 630/288-8145

To Advertise: See above for the office closest to you, or write to the Publisher. **Best in American Living Award:** To enter this design contest, contact address above. **Annual Report of Housing's GIANTS®:** To request a survey form, contact GIANTS400@reedbusiness.com. **For subscription inquiries and change of address:** Customer Service, Reed Business Information, 8878 S. Barrons Blvd., Highlands Ranch, CO 80126-2345; phone: 303/470-4445; fax: 303/470-4280; e-mail: subsmail@reedbusiness.com



Reed Business Information, A Division of Reed Elsevier Inc. | Specialized Business Magazines for Building & Construction | Research | Technology | Electronics | Computing | Printing | Publishing | Health Care | Foodservice | Packaging | Environmental Engineering | Manufacturing | Entertainment | Media | Home Furnishing | Interior Design | and Lodging. Specialized Consumer Magazines for Residential Design. PROFESSIONAL BUILDER (ISSN-1072-0561, GST #123397457, C.P.C. Intl Pub Mail #280631) Vol. 70, No. 14 is published monthly, with two additional issues in December by Reed Business Information, 8878 S. Barrons Blvd., Highlands Ranch, CO 80126. (Subscription includes all issues). Reed Business Information is a Division of Reed Elsevier Inc., 360 Park Avenue South, New York, NY 10010. Tad Smith, CEO; Jeff Greisch, President, Chicago Division. Periodicals Postage Paid at Littleton, CO 80126 and additional mailing offices. Circulation records are maintained at Reed Business Information, 8878 S. Barrons Blvd., Highlands Ranch, CO 80126-2345. Phone: 303/470-4445. POSTMASTER: Send address changes to PROFESSIONAL BUILDER, P.O. Box 7500, Highlands Ranch, CO 80163-7500. Publications Mail Agreement No. 40685520. Return undeliverable Canadian addresses to: Deutsche Post, 4960-2 Walker Road, Windsor ON N9A 6J3. Email: subsmail@reedbusiness.com PROFESSIONAL BUILDER copyright 2005 by Reed Elsevier Inc. Rates for nonqualified subscriptions: USA, \$109.90 1-year; Canada, \$179.90 1-year (includes 7% GST, GST#123397457); Mexico, \$164.90 1-year; foreign surface, \$224.90 1-year; foreign air expedited surcharge \$292.90 1-year. Except for special issues where price changes are indicated, single copies are available for \$10 US and \$15 foreign. Please address all subscription mail to PROFESSIONAL BUILDER, P.O. Box 7500, Highlands Ranch, CO 80163-7500. PROFESSIONAL BUILDER and ANNUAL REPORT OF HOUSING'S GIANTS are registered trademarks of Reed Properties Inc., used under license. Printed in the USA.

# Professional Builder®

## STAFF

VOL 70 NO 14

## Editorial Director

Paul Deffenbaugh 630/288-8190  
paul.deffenbaugh@reedbusiness.com

## Group Managing Editor

Erin Hallstrom-Erickson 630/288-8198  
erin.hallstrom@reedbusiness.com

## Production Editor

Rhonda Jackson 630/288-8167  
rhonda.jackson@reedbusiness.com

## Contributing Editor

Cheryl Cullen

## Education Editors

Brenda Sanders 202/266-8178  
sandersb@nahb.com  
Tom Stephani Chairman  
CGB Board of Governors

## Publisher

## Director, Building Group

Niles Crum 630/288-8280  
ncrum@reedbusiness.com

## Director of Electronic Media

Karthi Gandhi 630/288-8172  
karthi.gandhi@reedbusiness.com

## Circulation Manager

Angela Tanner 303/470-4488  
atanner@reedbusiness.com

## Group Creative Director

Bill Patton 630/288-8050  
bpatton@reedbusiness.com

## Editorial & Publishing Office

Professional Builder  
2000 Clearwater Drive  
Oak Brook, IL 60523  
Telephone: 630/288-8000  
Fax: 630/288-8145

## Reed Business Information

Tad Smith, Chief Executive Officer  
Jeff Greisch President, Chicago Division

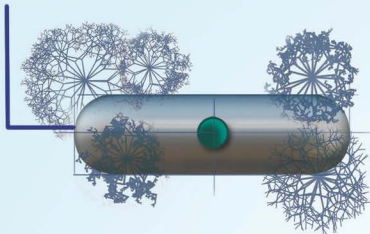
SUBSCRIBE TO  
PROFESSIONAL BUILDER ONLINE AT  
WWW.HOUSINGZONE.COM/SUBSCRIBE



# No matter where you turn, Propane's upgrading homes and sales.

## He's all about curb appeal.

Bury your propane tank, and everyone gets more enjoyment out of your yard.



## He's the reason more families are spending more time outdoors.

With propane grills, heat lamps, pool heaters, mosquito eliminators and lighting, you can think outside the home for increased profits.



## Relax. He heats faster and lasts longer.

Home buyers love that propane furnaces last up to ten years longer than heat pumps, and deliver warmer air faster.



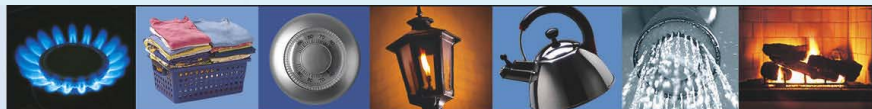
## Give your customers more, for less.

Based on 5-year averages, propane costs half as much per BTU as electricity.



Inside and outside, you can count on propane to provide your customers all-around comfort and efficiency.

For more information visit [usepropane.com](http://usepropane.com) and come see our booth at the International Builders' Show.



**PROPANE**  
EXCEPTIONAL ENERGY®





## Introducing the Barrington® Sierra™ Fiberglass Entry Door from Masonite

Masonite is pleased to introduce the Barrington® Sierra™ Series, the latest addition to our fiberglass entry door line. Specially engineered to meet the design needs of Southwest, Spanish or Mediterranean style homes, the Sierra Series combines the performance of fiberglass with the beauty of authentic hardwood texture to open up even more design possibilities.

For Free information circle 30

*Masonite. The Beautiful Door.®*

VISIT US AT  
BOOTH W2143